

GERMAN WWI AIRCRAFT 1:72 SCALE PLASTIC KIT



eduard

ProfiPACK



intro

The Junkers J.I was the first operational aircraft with an all-metal airframe. It was used for ground attacks, army co-operative and short-range reconnaissance. Because of this the front fuselage, containing the engine and cockpit, was built as an armed steel shell. The rest of the fuselage, wings and the tail had a dura-aluminum airframe with fabric cover and corrugated dura-aluminum plates covered the airframe. The Junkers J.I saw front line service for the first time in the summer of 1917 and served successfully until end of World War I.

Wing span - 15.0 m
Length - 9.06 m
Height - 3.47 m

Empty weight - 1766 kg
Loaded weight - 2176 kg
Climb - 1 000 m in 12.2 min

Max. speed - 155 km/h
Engine - 200hp Benz Bz IV

úvodem

Junkers J.I bylo první, operačně používané, letadlo s celokovovou konstrukcí draku. Byl používán jako bitevní letoun a letoun pro spolupráci s pěchotou. Z tohoto důvodu byla přední část trupu s motorem a prostory posádky řešena jako pancéřová skořepina. Zbytek trupu měl duralovou kostru a plátěný potah, křídla a ocasní plochy měly duralovou kostru, potaženou vlnitým duralovým plechem. První Junkersy J.I se dostaly na frontu v létě 1917, a úspěšně sloužily až do konce První světové války.

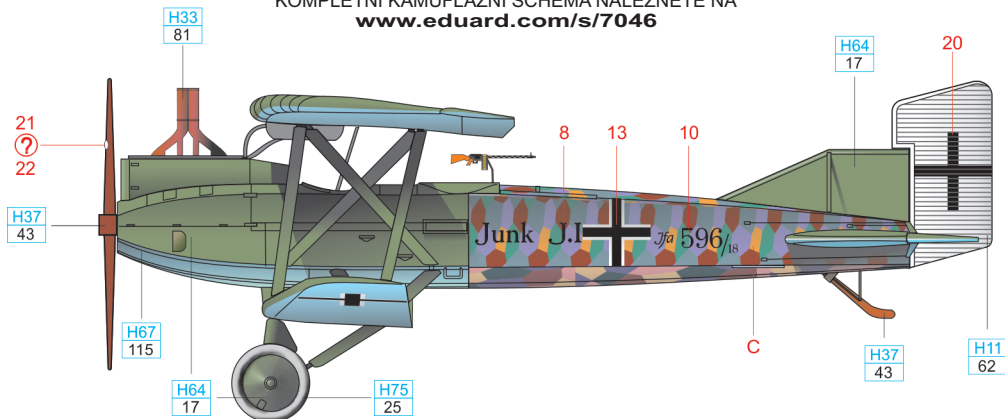
Rozpětí - 15,00 m
Délka - 9,06 m
Výška - 3,47 m

Prázdná váha - 1766 kg
Vzletová váha - 2176 kg
Stoupavost - 1 000 m / 12,2 min

Max. rychlost - 155 km/h
Motor - 200k Benz Bz IV

D Junkers J.I, 596/ 18, 1918

FOR COMPLETE PROFILE PLEASE REFER
KOMPLETNÍ KAMUFLÁŽNÍ SCHÉMA NALEZNETE NA
www.eduard.com/s/7046



ATTENTION



UPOZORNĚNÍ



ACHTUNG



ATTENTION



注意



Carefully read instruction sheet before assembling. When you use glue or paint, do not use near open flame and use in well ventilated room. Keep out of reach of small children. Children must not be allowed to suck any part, or pull vinyl bag over the head.



Před započatím stavby si pečlivě prostudujte stavební návod. Při používání barev a lepidel pracujte v dobře větrané místnosti. Lepidla ani barvy nepoužívejte v blízkosti otevřeného ohně. Model není určen malým dětem, mohlo by dojít k požití drobných dílů.

INSTRUCTION SIGNS

* INSTR. SYMBOLY

* INSTRUKTION SINNBILDEN

* SYMBOLES

* 記号の説明

OPTIONAL
VOLBABEND
OHNOUTOPEN HOLE
VYVRTAT OTVORSYMETRICAL ASSEMBLY
SYMETRICKÁ MONTÁŽNOTCH
ZÁREZREMOVE
ODRŽNOUTAPPLY EDUARD MASK
AND PAINT
POUŽIT EDUARD'S MASK
NABARVIT

PARTS



DÍLY



TEILE



PIÈCES

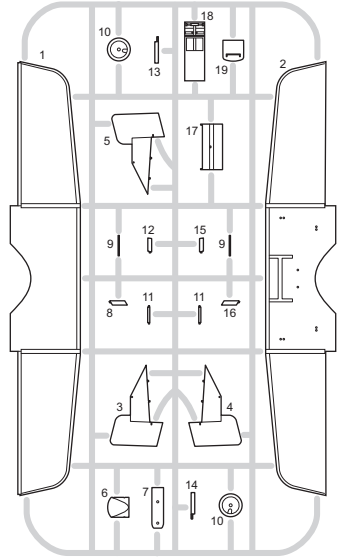
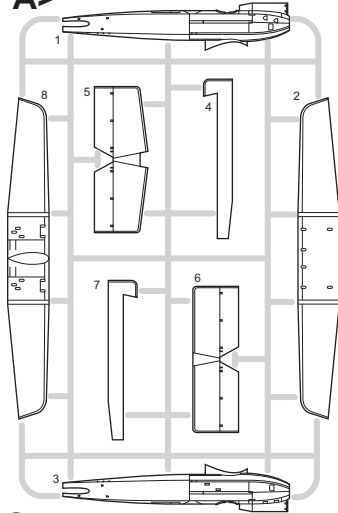


部品

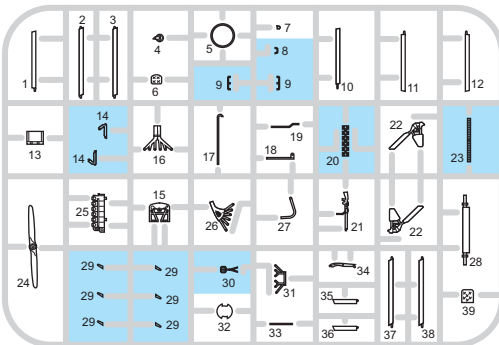
A>

PLASTIC PARTS

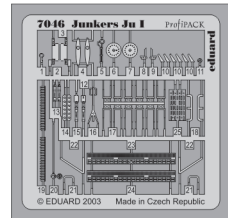
B>



C>



PE - PHOTO ETCHED DETAIL PARTS



Parts not for use. -Teile werden nicht verwendet. -Pièces à ne pas utiliser. -Tyto díly nepoužívejte při stavbě. -使用しない部品

COLOURS



BARVY



FARBEN



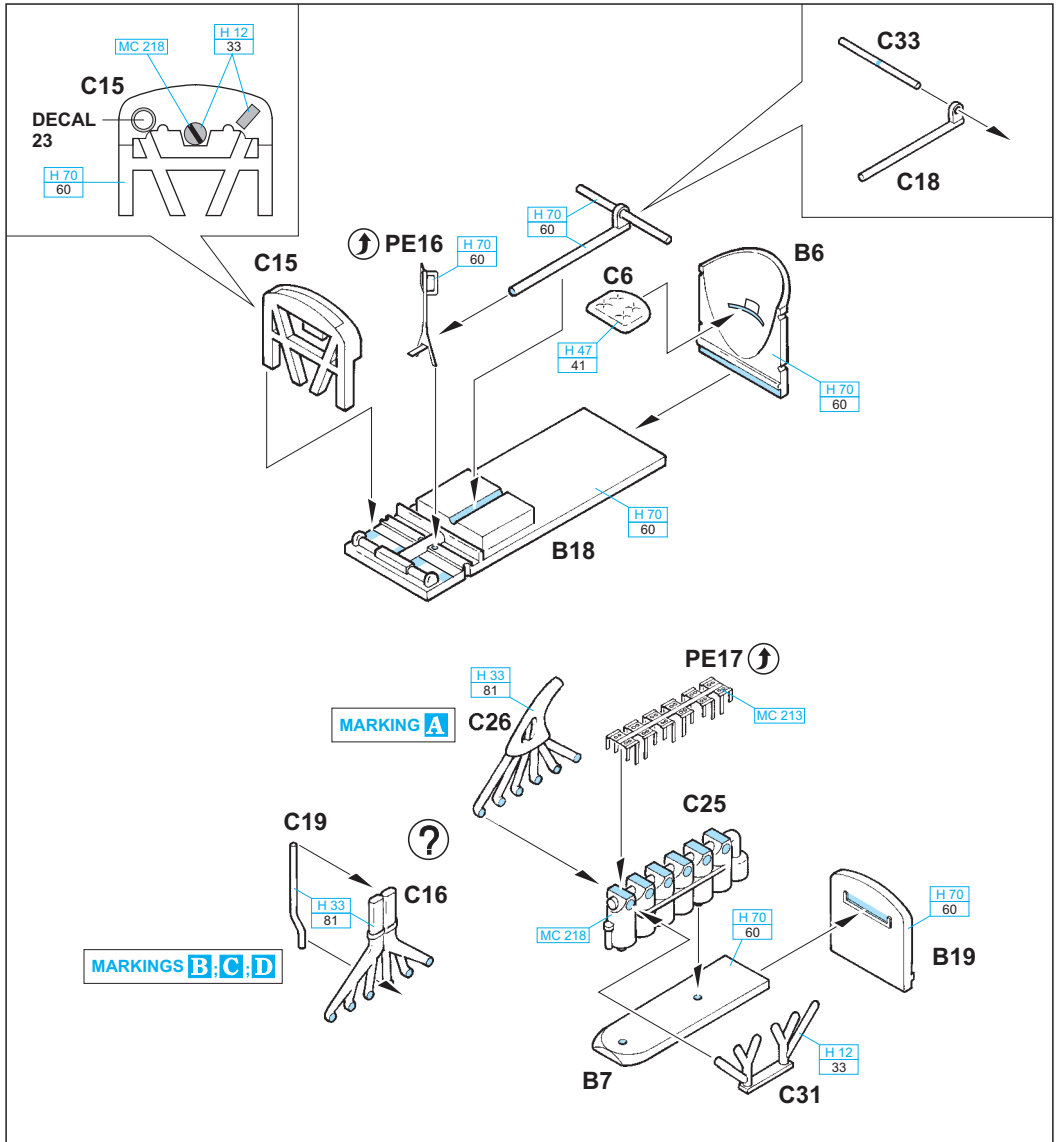
PEINTURE



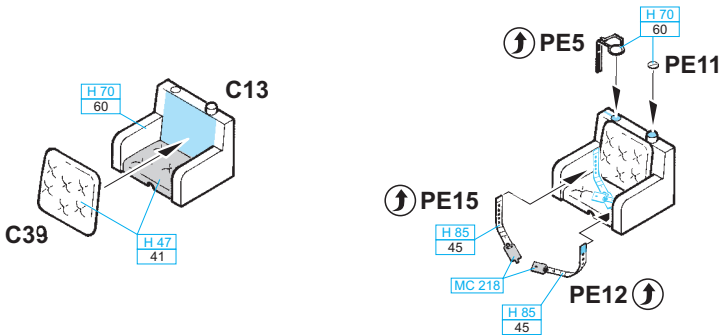
色

GSI Creos (GUNZE)			
AQUEOUS	Mr.COLOR		
[H 11]	C62	FLAT WHITE	
[H 12]	C33	FLAT BLACK	
[H 33]	C81	RUSSET	
[H 37]	C43	WOOD BROWN	
[H 39]	C67	PURPLE	
[H 47]	C41	RED BROWN	
[H 64]	C17	DARK GREEN	RLM71
[H 66]	C19	SANDY BROWN	

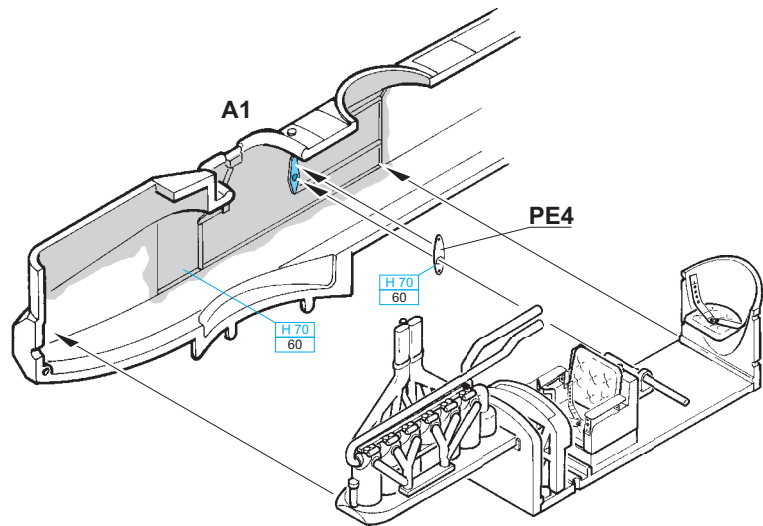
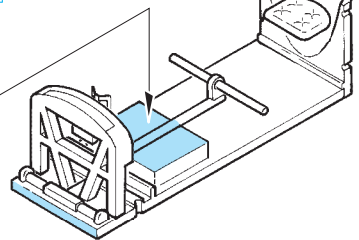
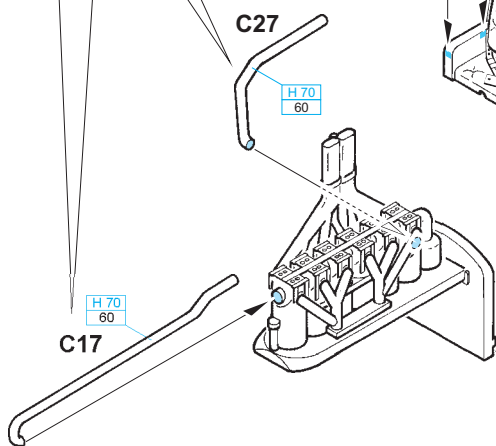
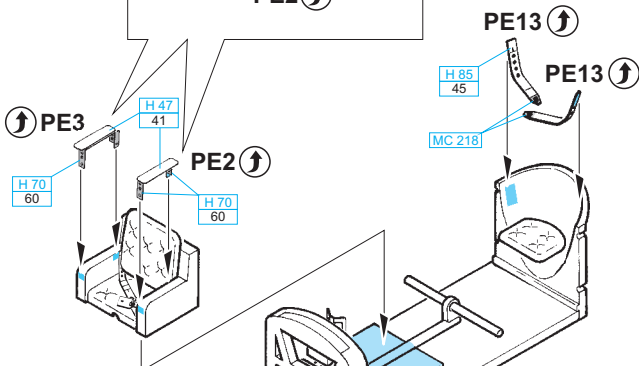
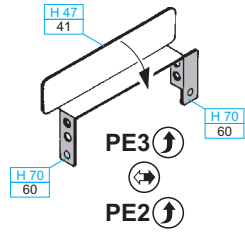
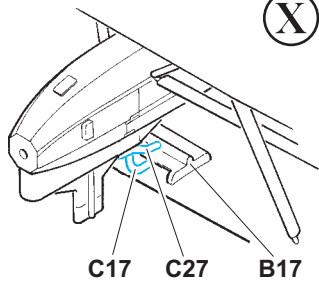
AQUEOUS	Mr.COLOR		
[H 67]	C119	LIGHT BLUE	RLM65
[H 70]	C80	GRAY	RLM02
[H 75]	C25	DARK SEAGRAY	
[H 85]	C45	SAIL COLOR	
Mr.METAL COLOR			
[MC213]		STAINLESS	
[MC214]		DARK IRON	
[MC215]		ALUMINIUM	
[MC216]		BRASS	

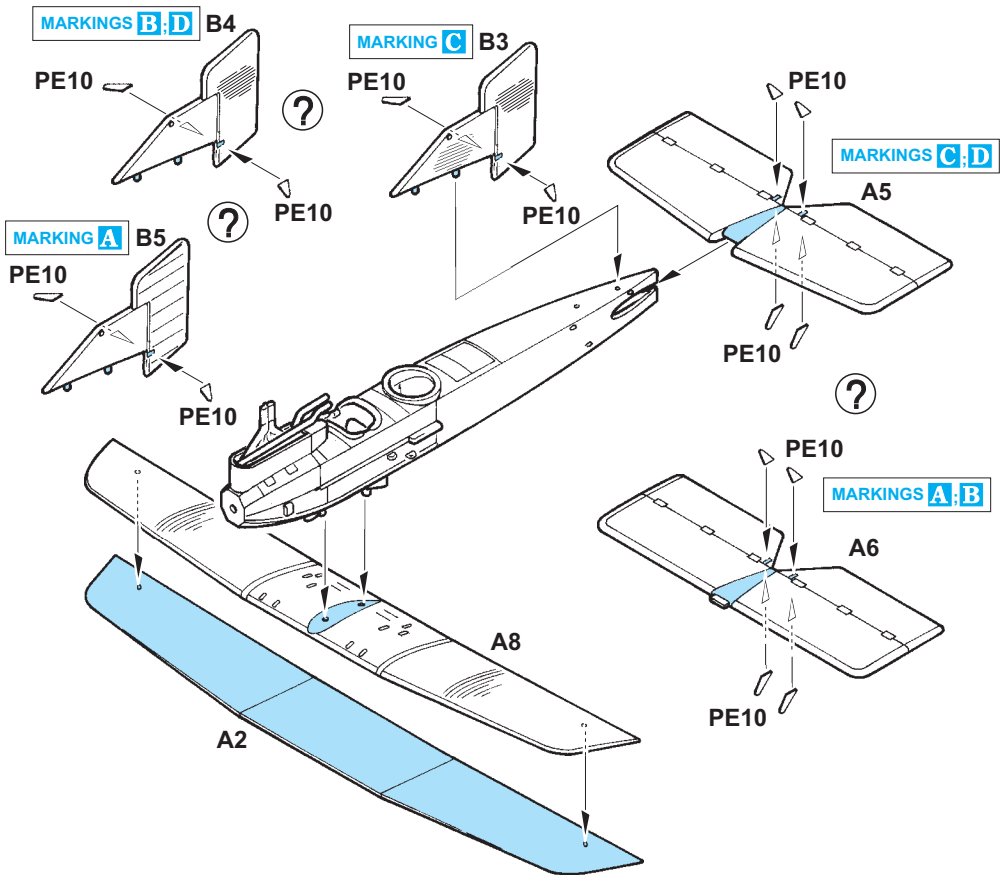
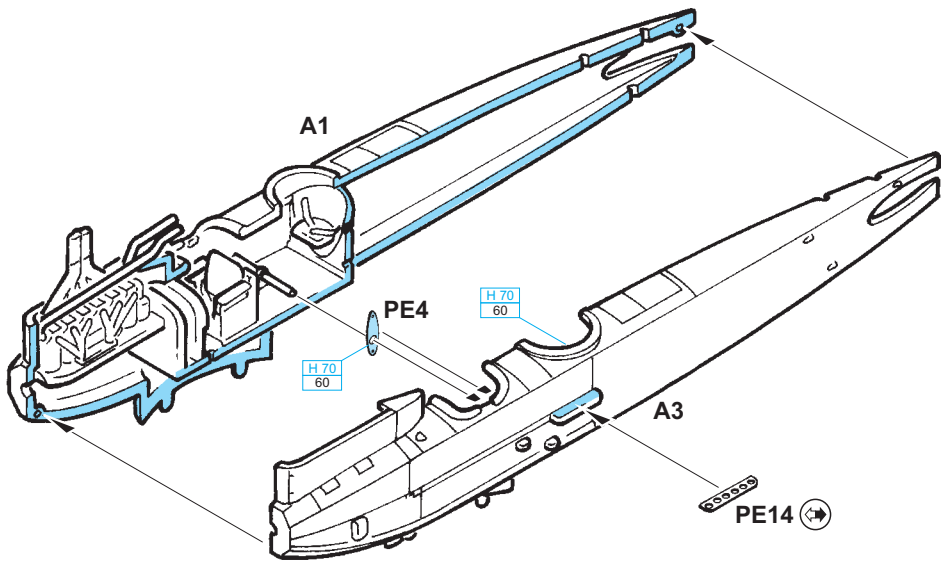


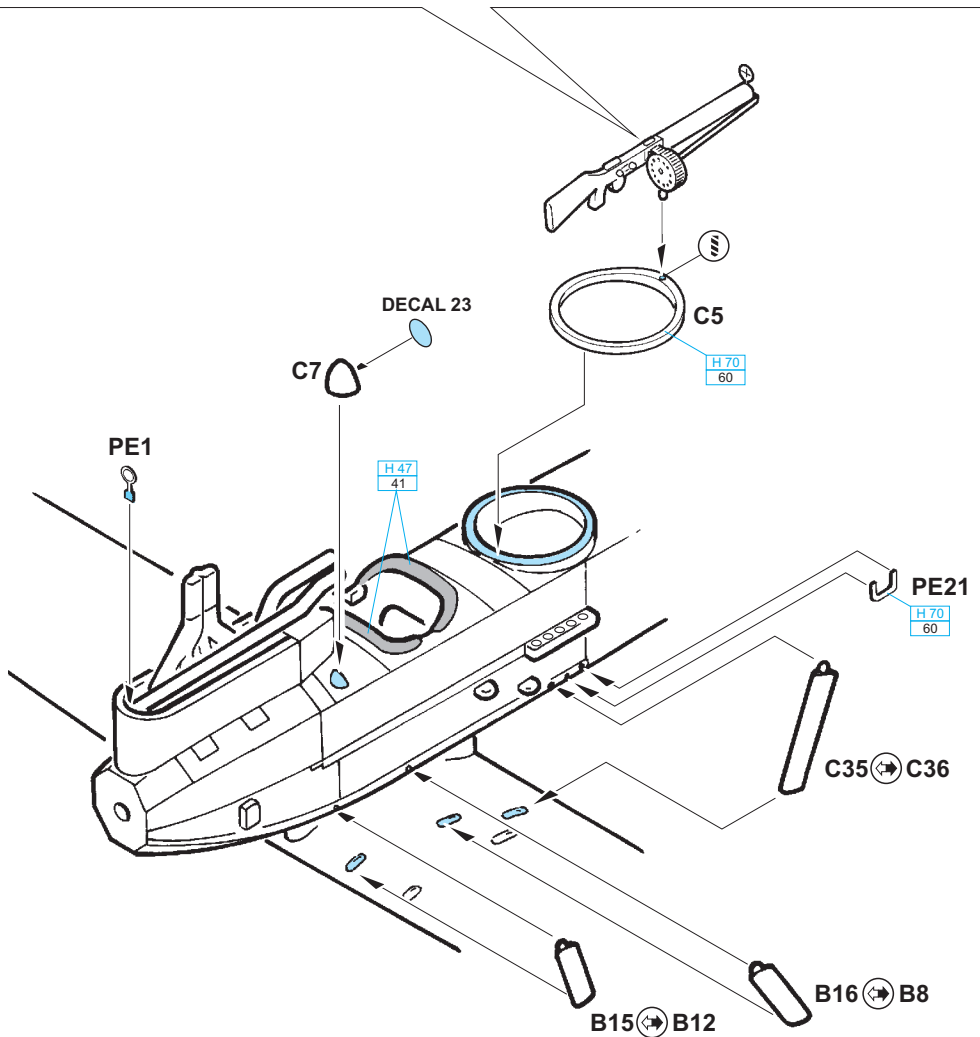
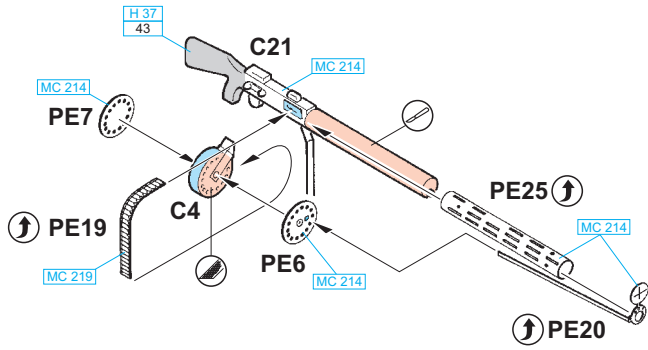
A

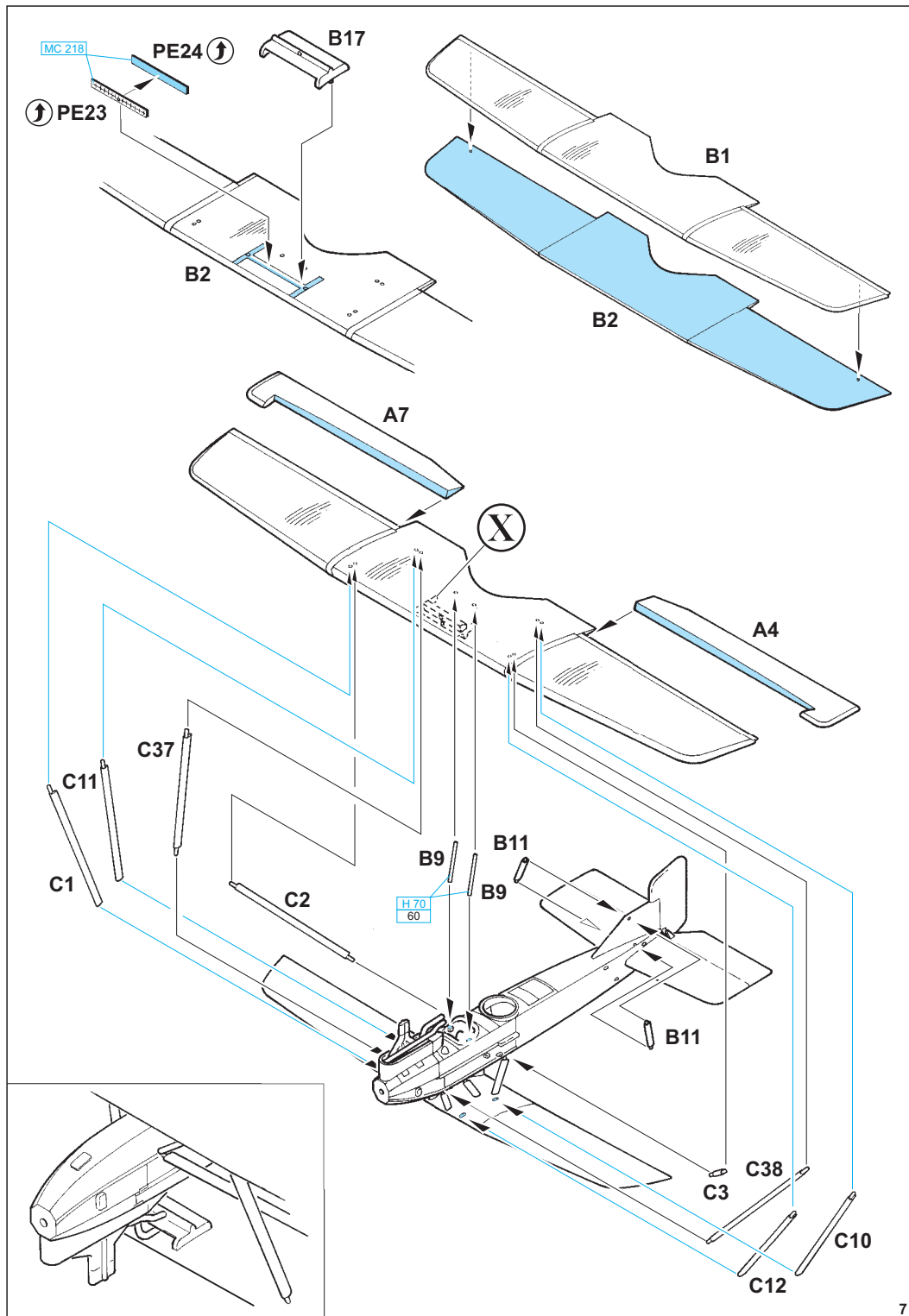


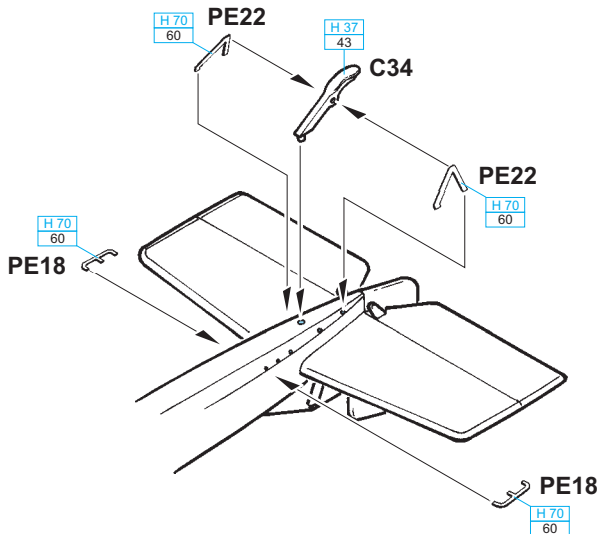
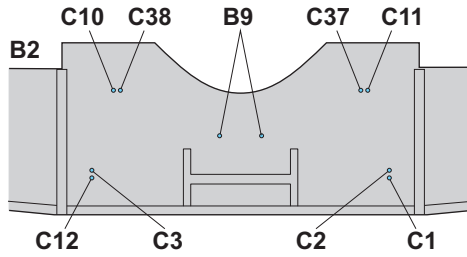
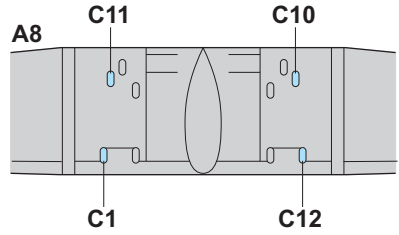
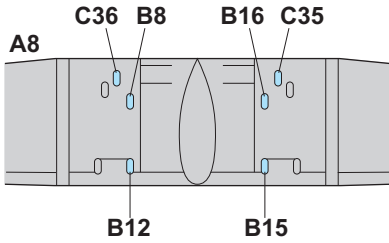
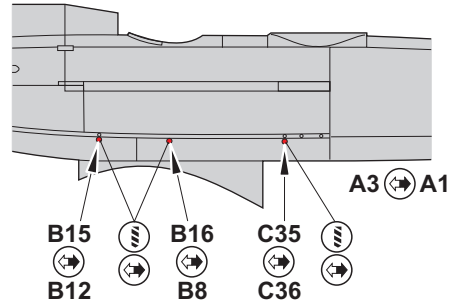
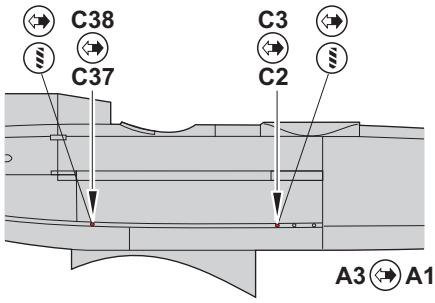
X

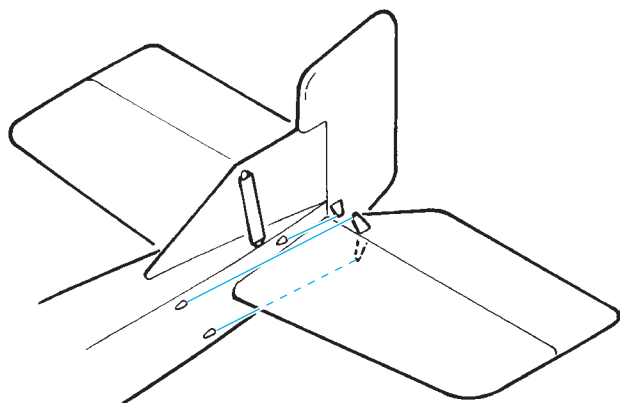
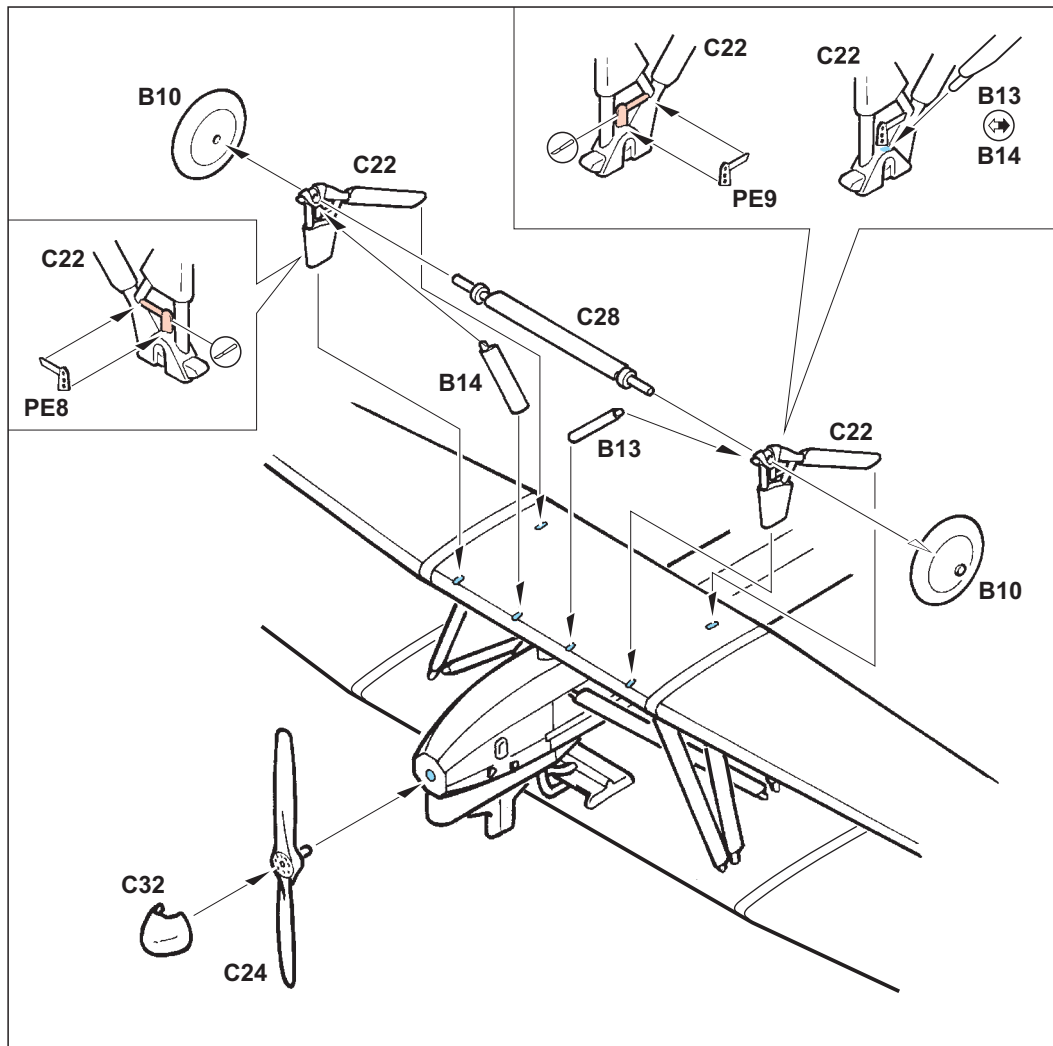




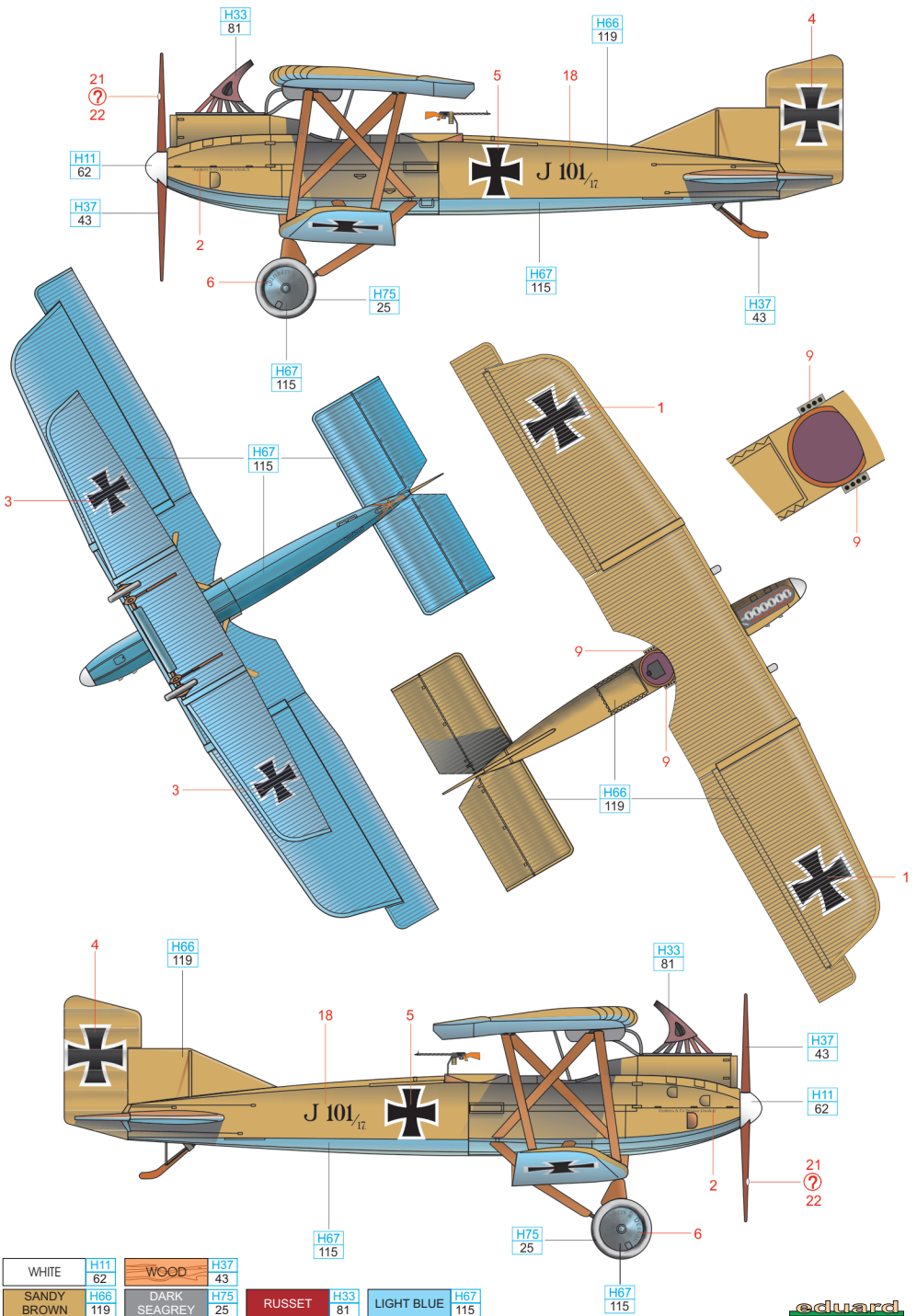






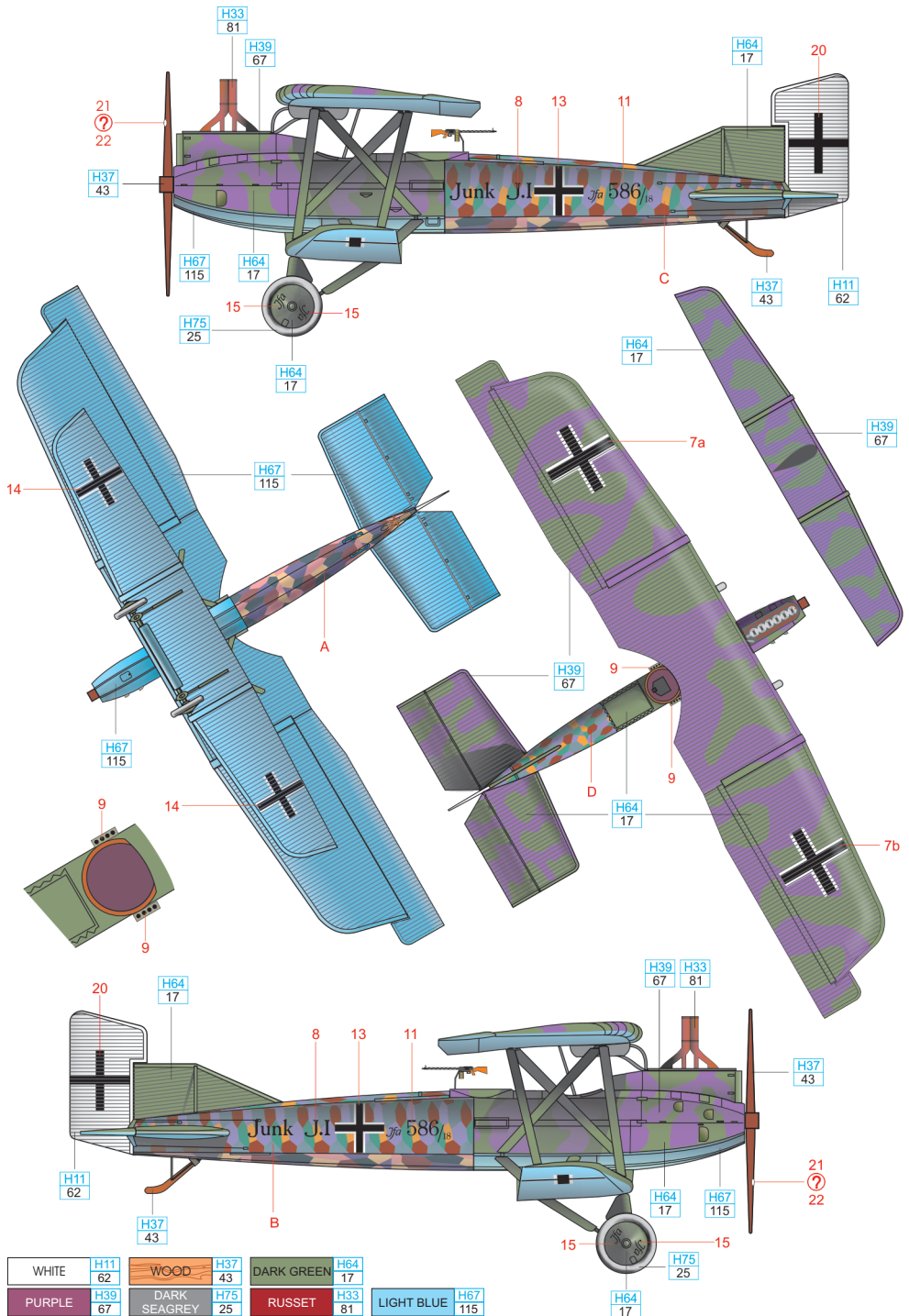


A Junkers J.1, 101/17, Flieger Abteilung (A) 250, Autumn 1917



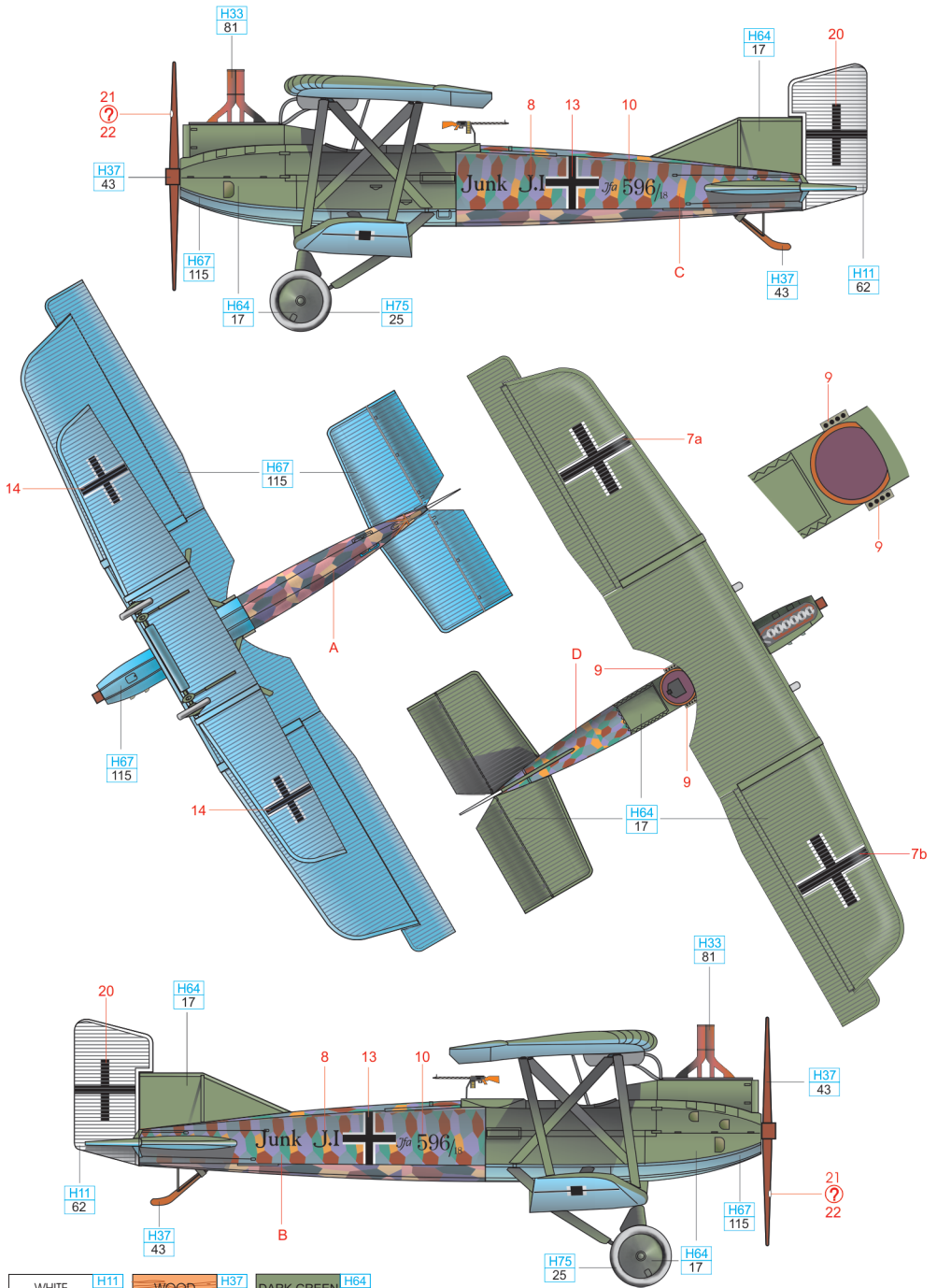
WHITE	H11 62	WOOD	H37 43				
SANDY BROWN	H66 119	DARK SEAGREY	H75 25	RUSSET	H33 81	LIGHT BLUE	H67 115

C Junkers J.1, 586/ 18, Villers la Chevres, September 1918



WHITE	H11 62	WOOD	H37 43	DARK GREEN	H64 17
PURPLE	H39 67	DARK SEAGREY	H75 25	RUSSET	H33 81
				LIGHT BLUE	H67 115

D Junkers J.1, 596/ 18, 1918



WHITE	H11 62	WOOD	H37 43	DARK GREEN	H64 17
LIGHT BLUE	H67 115	DARK SEAGREY	H75 25	RUSSET	H33 81