

NÁVOD / INSTRUCTIONS FH-1 Phantom 'US NAVY'

1/72

Historie

První proudový letoun US NAVY operující z palub letadlových lodí a první proudový letoun US MARINES v historii, to vše se slučuje v jediném typu stíhacího letounu. Stroji firmy Mc Donnell dostal označení FH-1 a bojové jméno Phantom. To dostala, s číslovkou 11, později jiná stíhačka, jejíž sláva původní Phantom, i přes jeho historický význam zcela zastínila. Firma Mc Donnell vznikla v roce 1939, svou první zakázku, výrobu komponentů pro jiné výrobce dostala v roce 1940. Během druhé světové války se firma věnovala licenční výrobě. Sestavila ale konstrukční tým vedený ambiciózním Kendallem Perkinsem. Ten během let 1941 až 44 pracoval na supervýkonné stíhačce XP-67 Bat. Ta zůstala v prototypu díky nevyzrálým motorům. Ještě v době prací na XP-67, v lednu 1943, byl konstrukční tým pověřen novou prací. US NAVY objednalo konstrukci proudové stíhačky. Ta dostala původně označení FD-1, později změněné v roce 1947 na FH-1 (v systému označování US NAVY písmeno D označovalo firmu Douglas). Tým vedený K. Perkinsem navrhl celokovový jednoplošník s přímým křídlem. Motory dodala firma Westinghouse. Vzhledem k nevyjasněnosti koncepce se původně uvažovalo o osmi motorech. Nakonec bylo vybráno řešení se dvěma motory u trupu. Výzbroj tvořilo šest kulometů ráže 12,7 mm v přidi. Nový stroj dostal bojové jméno Phantom. Původní motory Model 19 nedávaly dostatečný výkon a byly poruchové. S jedním s těchto motorů zahájil prototyp XFD-1 pojezdové zkoušky. Náhodný vzlet při pojiždění 26. ledna 1945 je považován za první let Phantomu. Testy prvního prototypu probíhaly do 1. listopadu 1945, kdy havaroval a pilot W. Burke zahynul. Pro firmu to bylo těžké období. Původní objednávka na 100 ks byla s koncem války snížena na 30 ks. Nakonec byla ale zvednuta na 60 ks. Zkoušky byly dokončeny s druhým prototypem. Druhý prototyp během zkoušek vzletl a přistál jako první proudový letoun na letadlové lodi. Sériové stroje se od prototypů odlišovaly hranatým zakončením svislé ocasní plochy, jednodušším provedením čelního štítu kabiny, zvětšenými nádržemi a možností podvěsit přídatnou nádrž pod trup. První sériové stroje, přeznačené na FH-1 dostala jednotka VF-17A. Ta se tak stala první proudovou jednotkou US NAVY. Po přeznačení na VF-171 ale brzy své Phantomy vyměnila za modernější Banshee. Druhou skupinou vyzbrojenou Phantomy se stala VF-172. První jednotkou US MARINES VFM-122, vedenou esem M. E. Carlem dostala své FH-1 na podzim 1947. U této skupiny vznikla jedna z akrobatických skupin létajících na Phantomech, pojmenovaná Marine Phantoms. Další vznikla v Naval Air Test Center v Patuxent River. Ta nesla jméno Grey Angels, ale říkalo se jí také skupina admirálů. Tvořili ji totiž kontraadmirálové D. Galler, E.A. Cruise a A. Soucek. Phantomy vydržely v první linii poměrně krátce. Byly přesunuty k záložním jednotkám Naval Air Reserve na různých NAS po celých USA. Do roku 1955 byly vyřazeny. Dva stroje a třetí jako zdroj náhradních dílů byly použity v roce 1964 pro výcvik civilních pilotů proudových letadel společností Progressive Aero Inc.

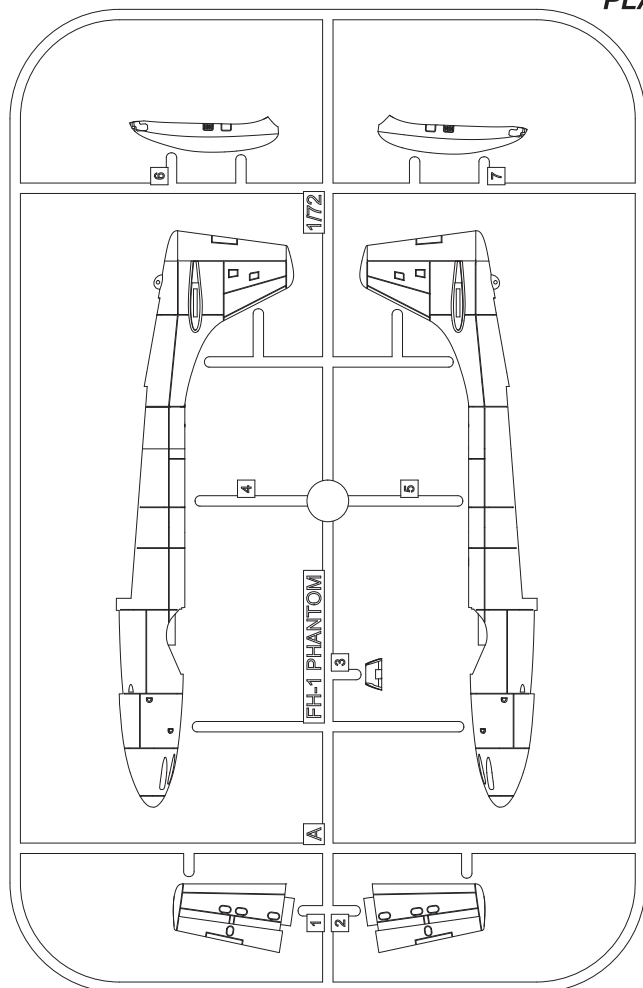
Rozpětí: 12,42 m, délka: 11,81 m, max. rychlost: 780 km/h ve výšce 4570 m, počáteční stoupavost: 24 m/s, dostup: 10 515 m, dolet s př. nádrží: 1465 km.

History

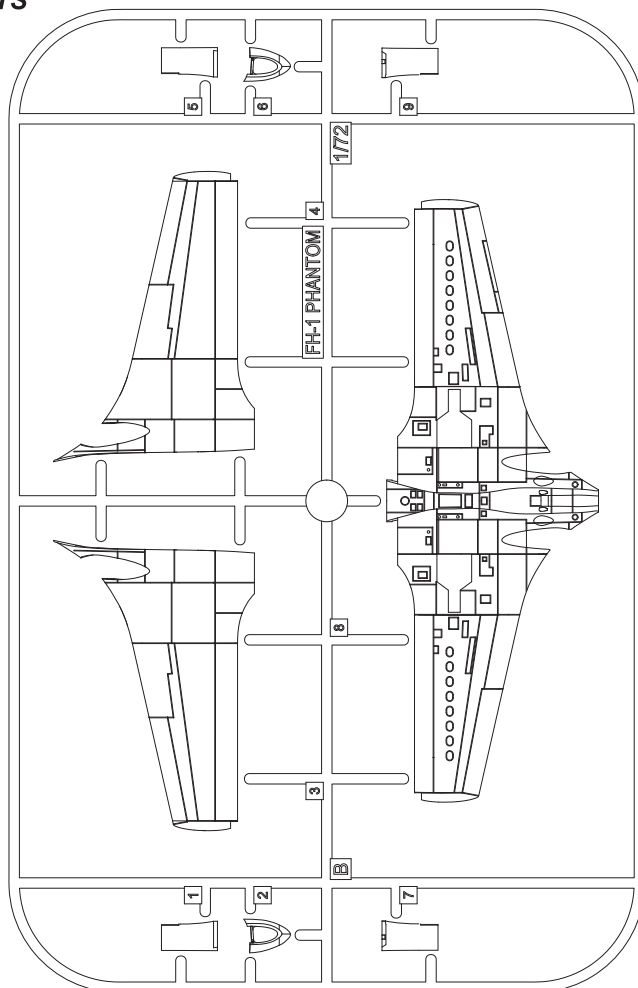
The first US Navy's jet aircraft to be operated from aircraft carriers and the first jet of the US Marines ever, such could be the description of the FH-1 airframe produced by McDonnell which was also commonly known as the Phantom, although the same name, just with a number 11 added, would later be given to another and much more popular jet whose fame would later eclipse the historic significance of the original Phantom. McDonnell company was established in 1939, and in 1940 it received its first contract for a production of subassemblies for other producers. During the Second World War, the company focused mainly on licence production. A McDonnell's own design team, led by ambitious Kendall Perkins was also set up in this period and between 1941 and 1944, the team worked on a project of a high performance fighter aircraft, the XP-67 Bat. The engines used power the plane were a complete letdown and the project did not proceed beyond the prototype stage. In January 1943, while still working on the Bat project, the design team was assigned a new job. The US Navy commissioned a jet fighter aircraft to be built which was to be known as the FD-1, later to be renamed to the FH-1 in 1947 (in US Navy system, the letter D denoted the Douglas company). The team, led by K. Perkins, put forward a concept of a straight wing monoplane of all-metal construction. The power plants were supplied by Westinghouse. Originally, before the whole concept of the aircraft became clear enough, as many as eight engines were considered per each machine. Eventually, a more conventional design with two powerplants on either side of the fuselage was accepted. The machine was fitted with six .5 cal machine guns in the nose section and the Phantom military nickname was chosen. The type's Model 19 powerplants proved to lack the necessary performance and were quite unreliable, too. However, the prototype XFD-1 machine begun its taxiing tests fitted with this type of powerplants, to be more precise it was fitted with just one engine. On 26 January 1945, an accidental hop occurred during taxiing which was considered the type's very first take off. The flight tests went on until 1 November 1945 when the plane crashed, killing its pilot, W. Burke. It was hard times for the company, indeed. The original order calling for 100 examples of the aircraft was cut down to just 30 airframes by the end of the war, however, eventually, as many as 60 airframes were requested. The flight tests went on with the second prototype, during these tests the very first landing and consequent take off from an aircraft carrier occurred, making the Phantom the very first naval jet aircraft to achieve this milestone. The production machines differed from the prototypes by having their tail fins squared off, the wind shield was simplified, fuel tanks enlarged and a provision for another tank carried under the belly was also made. The very first production airframes, the FH-1, went to VF-17 unit, making it the first jet aircraft unit of the US Navy. The unit was later re-equipped with the more modern Banshee type and renamed to VF-171. The second Navy unit to operate the Phantom was VF-172, while the first Marines unit to do so was VFM-122, which, led by ace pilot Marion E. Carl received their FH-1s during the Autumn of 1947. It was also this unit where the first FH-1 display, or aerobatics group was formed, named the Marine Phantoms. Another one was established at the Naval Air Test Center at Patuxent River, named the Gray Angels, but was also unofficially known as the Admirals' Group as its members were Rear Admirals D. Galler, E.A. Cruise and A. Soucek. The FH-1 Phantom did not see very long first line service, it was transferred to Naval Air Reserve units at various Naval Air Stations throughout the US rather soon and by 1955, the Phantom had retired from active service. In 1964, two airframes and another one to as a source of spare parts were used to civil jet pilot training by Progressive Aero Inc. company.

Wingspan: 12.24m, length: 11.81m, top. speed: 780km/h at 4,570m, initial rate of climb: 24m/s, ceiling: 10,515m, range with external fuel tank: 1,465km.

PLASTIC PARTS

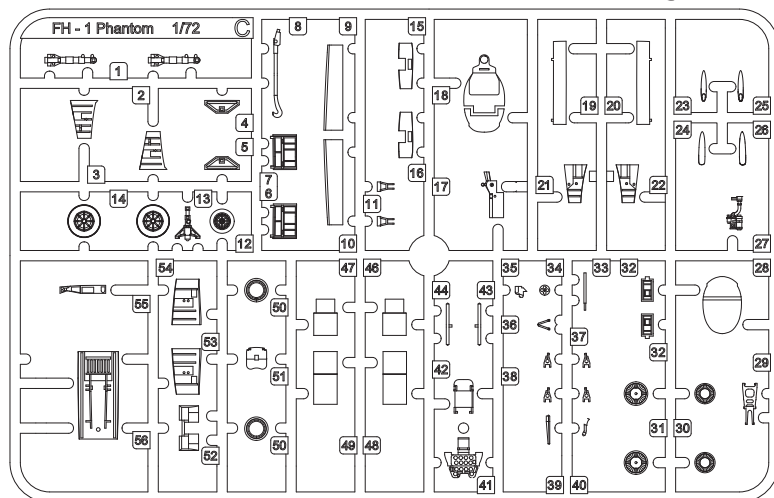


A



B

C



CLEAR PARTS (K)

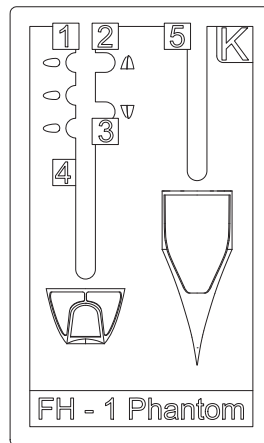
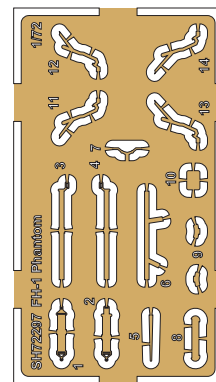


PHOTO-ETCHED PARTS (PP)



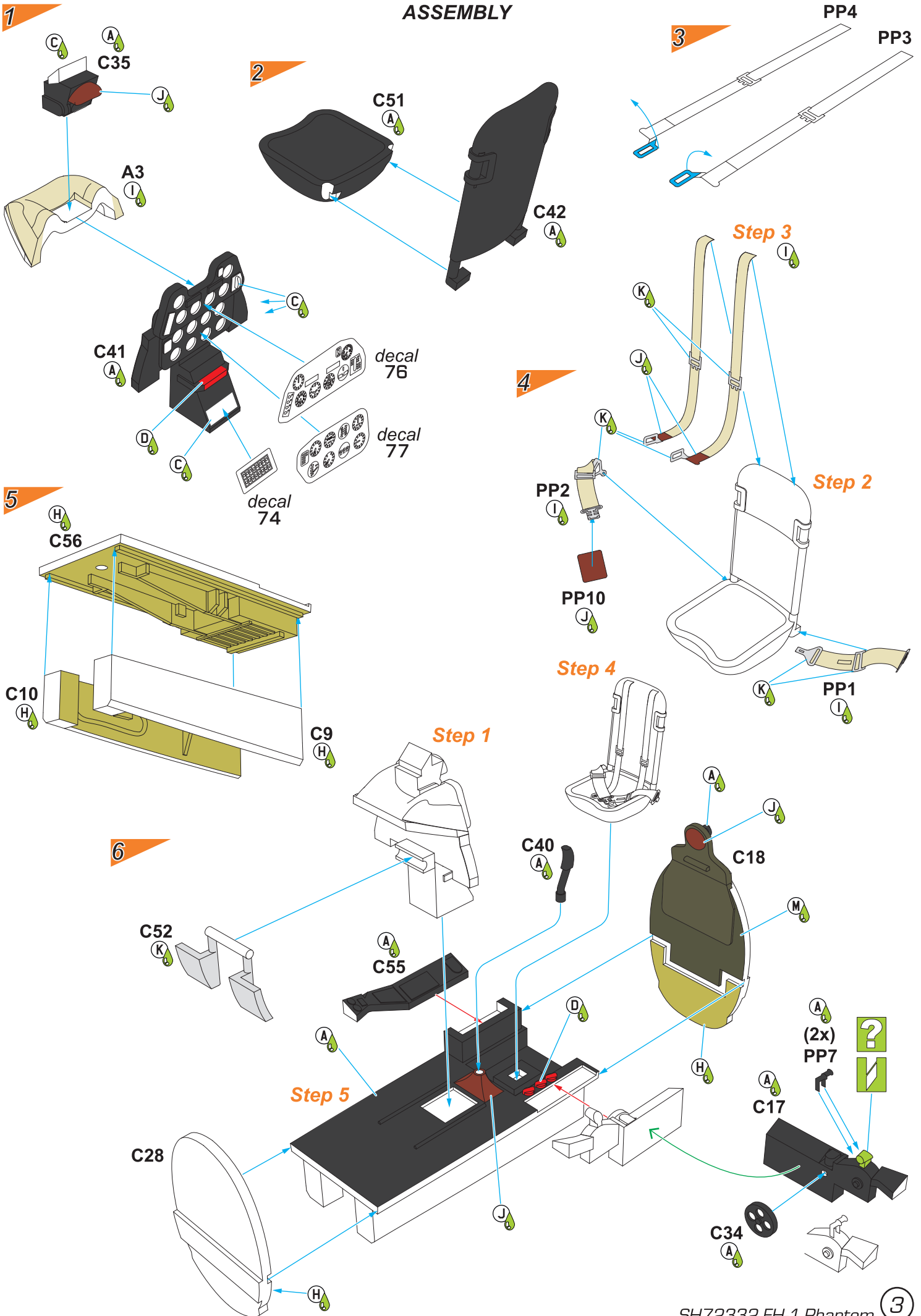
Barvy GUNZE/ GUNZE Colour No.

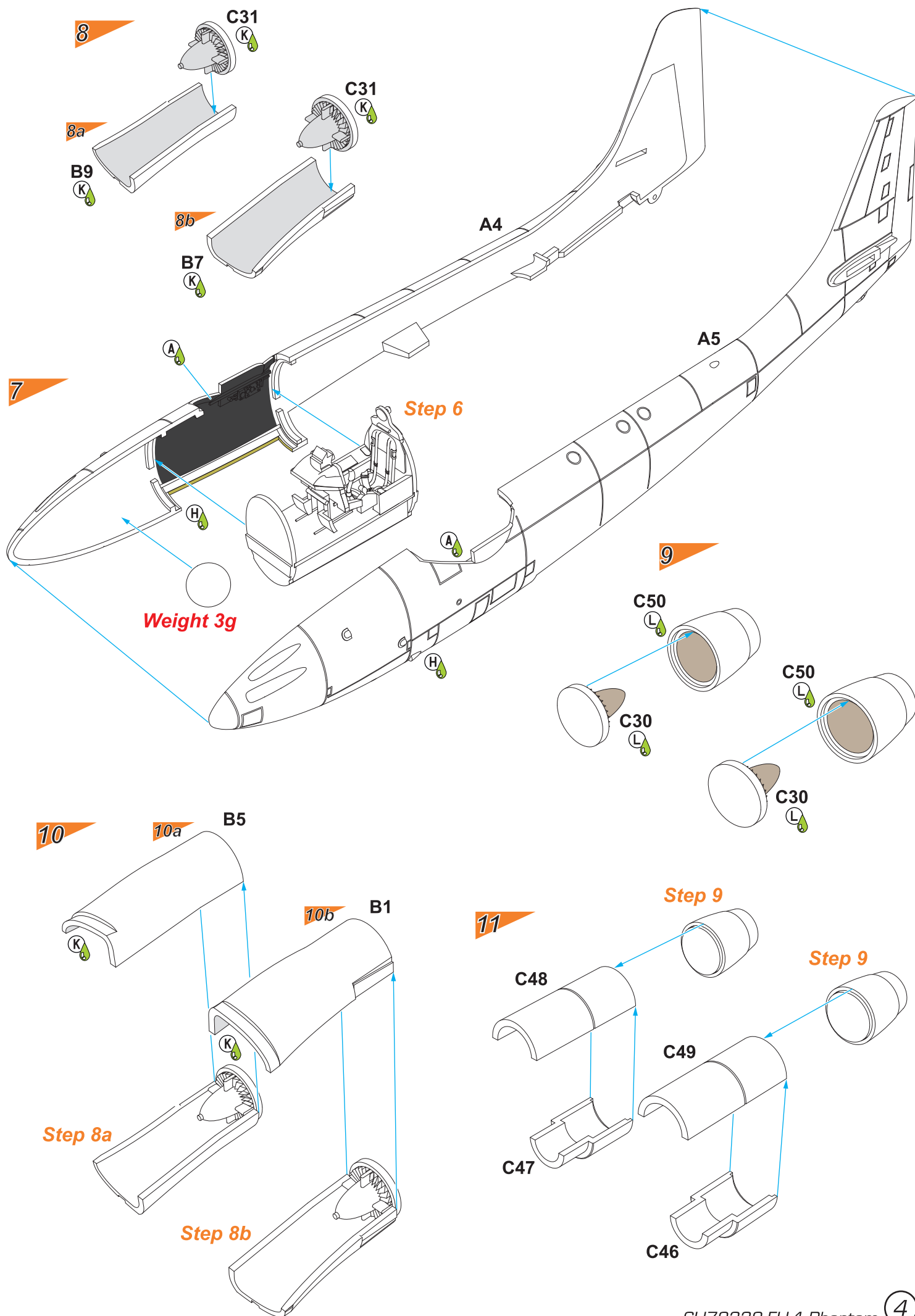
| | | | |
|------------------------------------------------|------------|---------------------------------------------------------|-----------|
| A Černá / Black | H12 / C33 | I Barva plátna / Tan | H27 / C44 |
| B Barva pneu / Tire Black | H77 / C137 | J Barva kůže / Red Brown | H17 / C29 |
| C Bílá / White | H1 / C1 | K Hliník / Aluminium | H8 / C8 |
| D Červená / Red | H3 / C3 | L Opálený kov / Burnt Iron | SM05 |
| E Oranžová / Orange | H14 / C59 | M Olivová / Olive Drab | H52 / C12 |
| F Žlutá / Yellow | H4 / C4 | N Zelená / Green | H26 / C66 |
| G Lesklá mořská modrá / Glossy Sea Blue | C365 | O Chromová základní žlutá / Zinc Chromate Yellow | C352 |
| H Interiérová zelená / Interior Green | C351 | | |

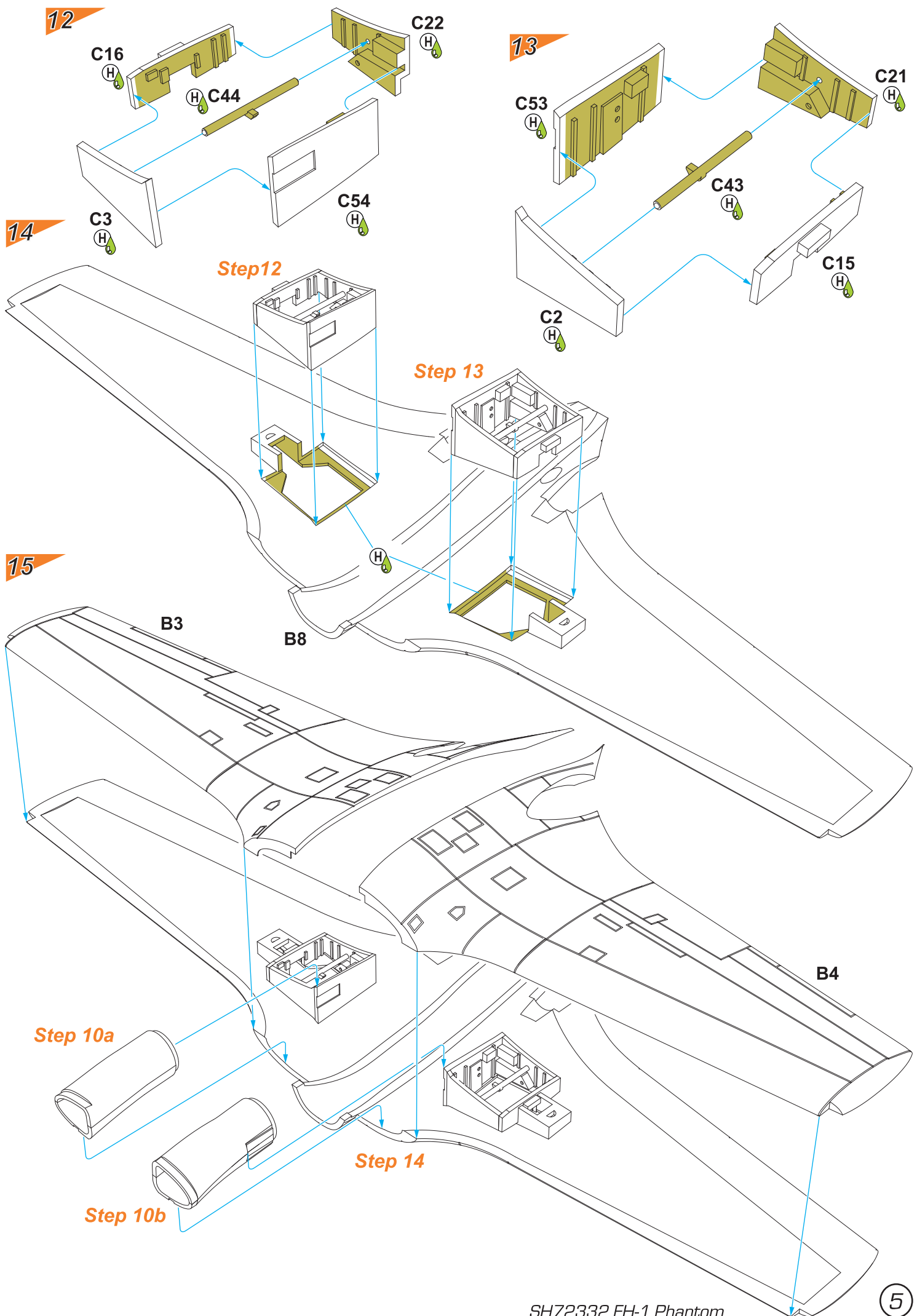
SYMBOLS

| | | | | | | |
|---------------------------------------------------------------|-------------------------------------------------------------------------------------------------------------------|-----------------------------------------------|---------------------------------------------------------------------|----------------------------------------------------------------|------------------------------|------------------------------------------------|
| ? MOŽNOST VOLBY OPTIONAL NACH BELIEBEN OPTION | ● POUŽÍT KYANOAKRYLÁTOVÉ LEPIDLO INSTANT CYANOACRYLATE GLUE ZYANOAKRYLATKLEBER COLLE CYANOACRYLAT | ↶↷ OHNOUT BEND BIEGEN COURBER | ✋ ZHOTOVIT NOVÉ SCRATCH BUILD FERTIGSTELLEN ACHEVER | ✂ ŘEZAT/VRTAT CUT OFF/DRILL ENTFERNEN DETACHER | A GSI colours code | ● NATŘÍT COLOUR FARBEN PEINDRE |
|---------------------------------------------------------------|-------------------------------------------------------------------------------------------------------------------|-----------------------------------------------|---------------------------------------------------------------------|----------------------------------------------------------------|------------------------------|------------------------------------------------|

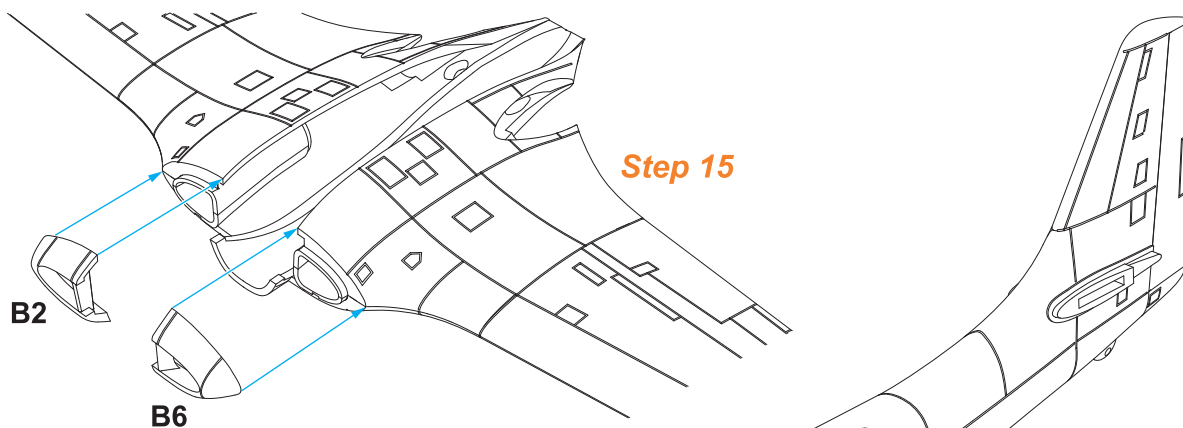
ASSEMBLY





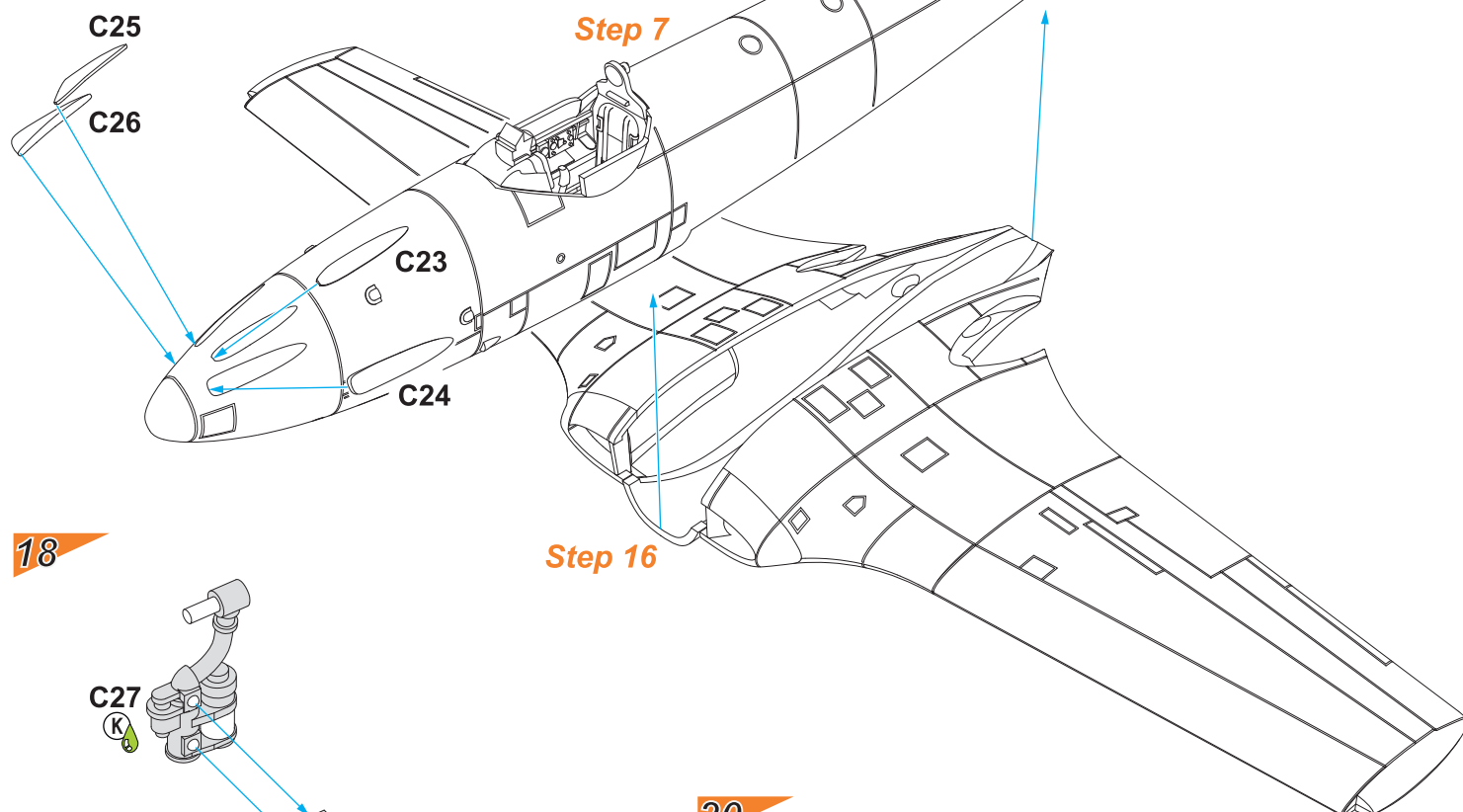


16



Step 15

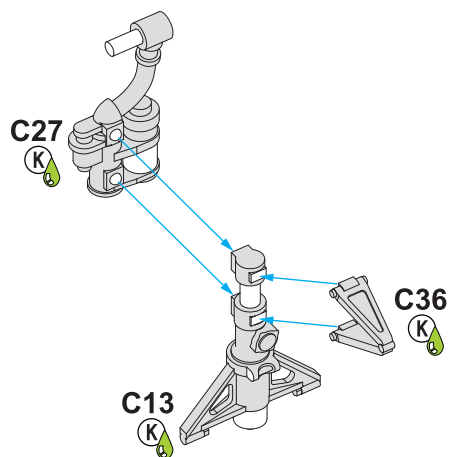
17



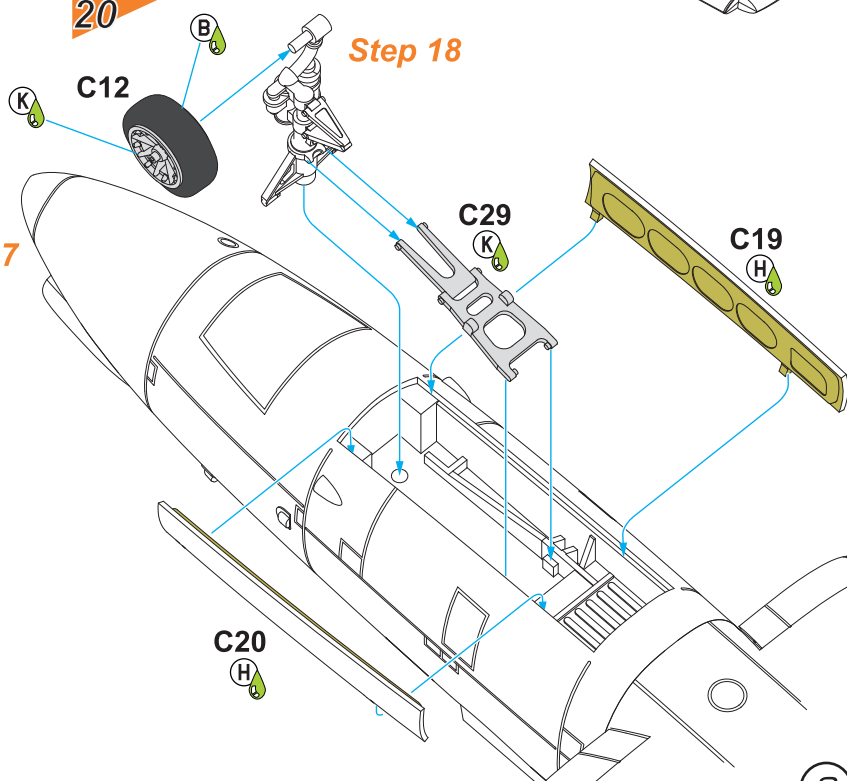
Step 7

Step 16

18



20

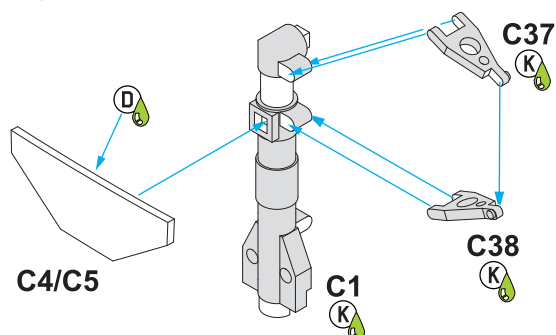


Step 18

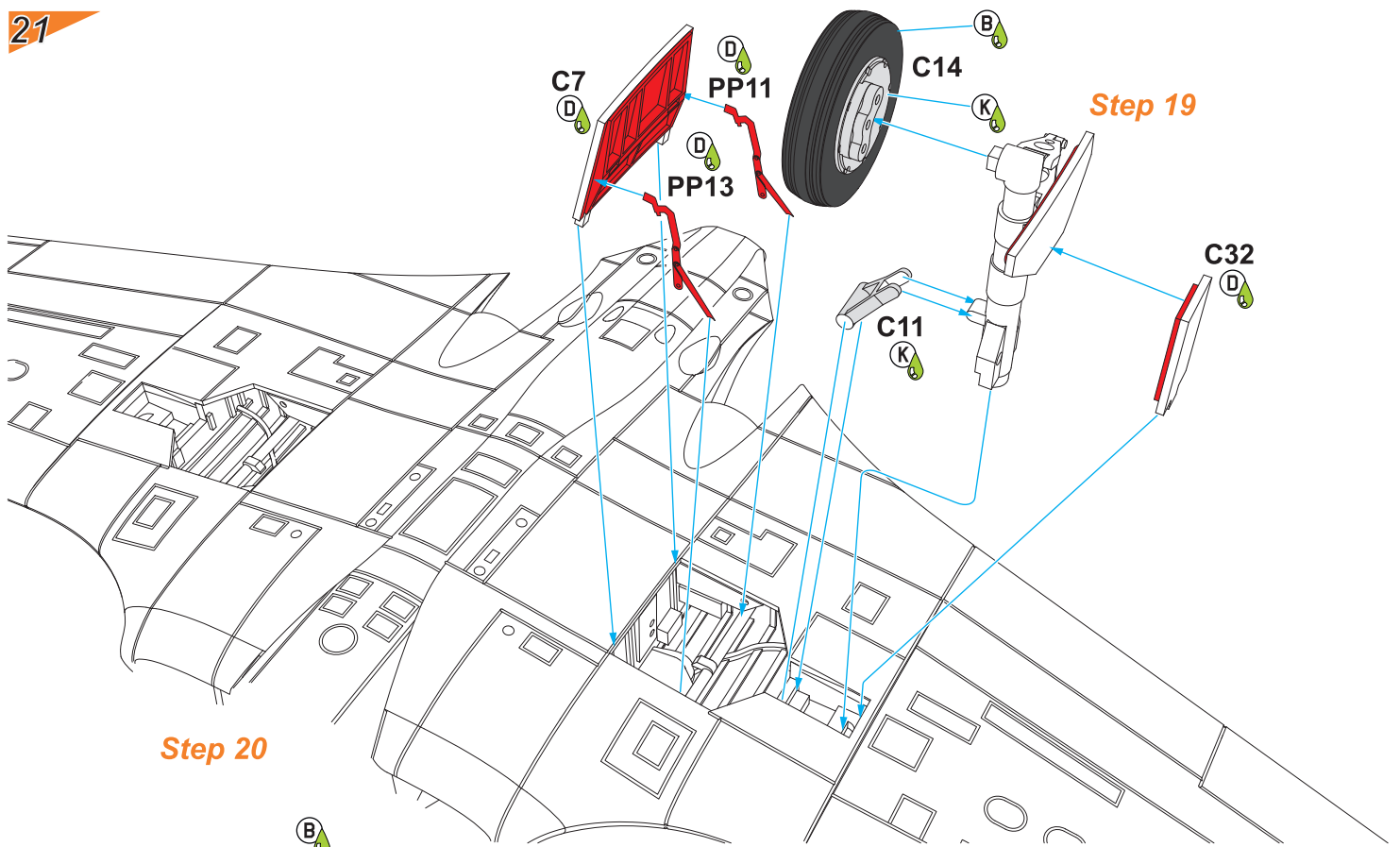
Step 17

(2x)

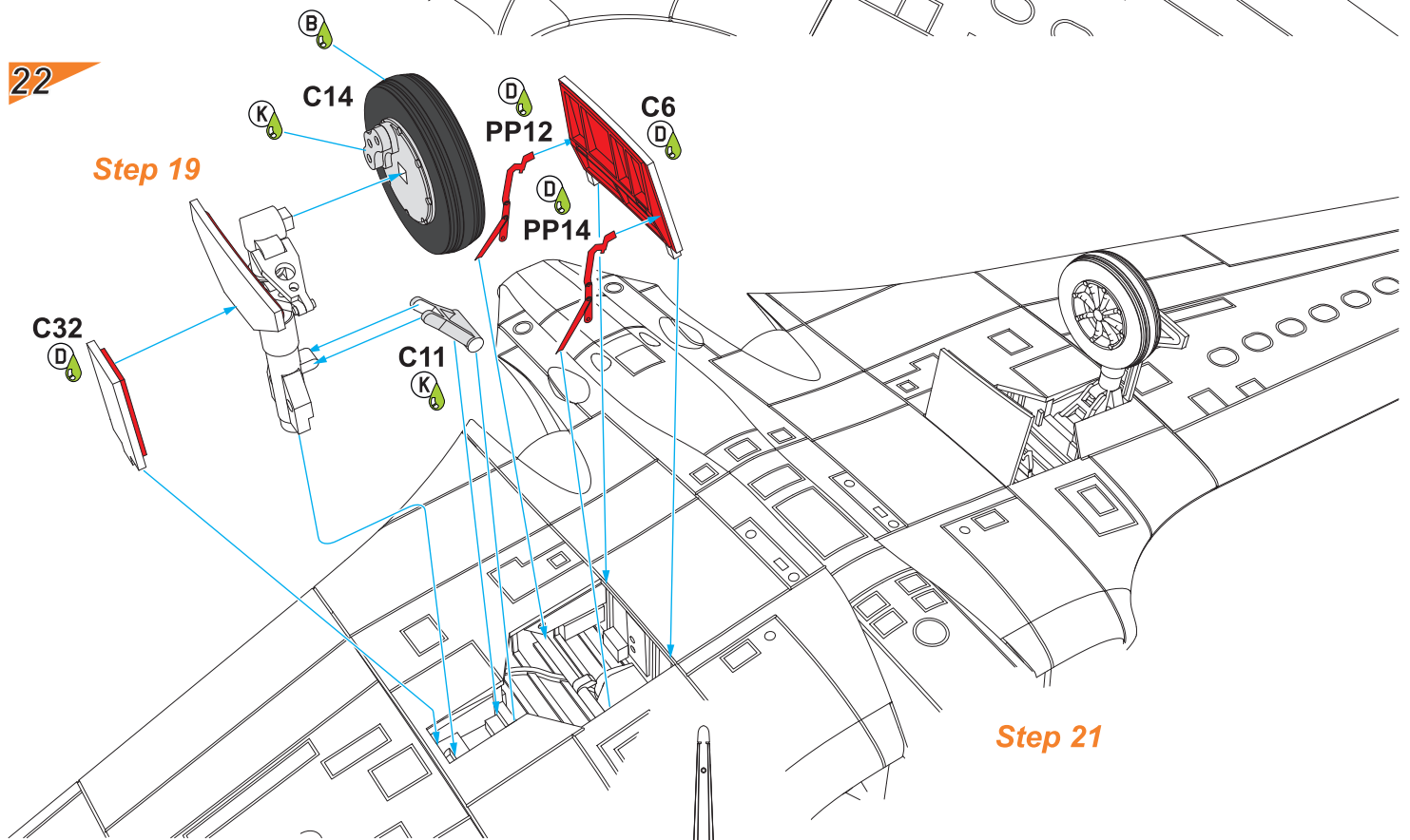
19



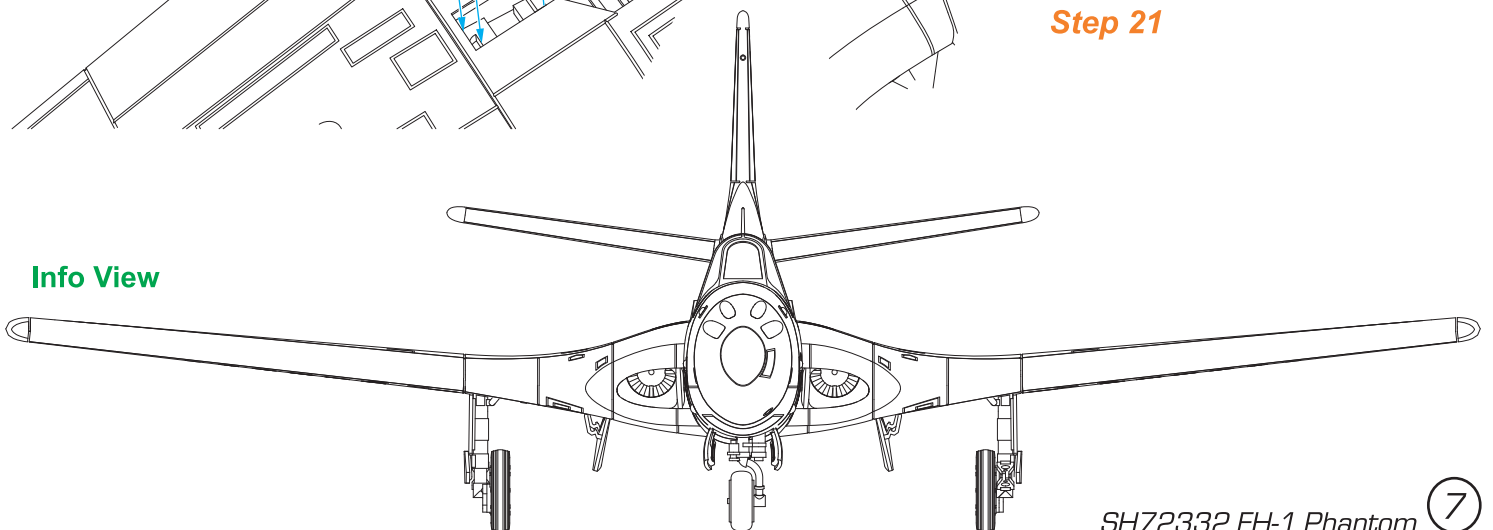
21



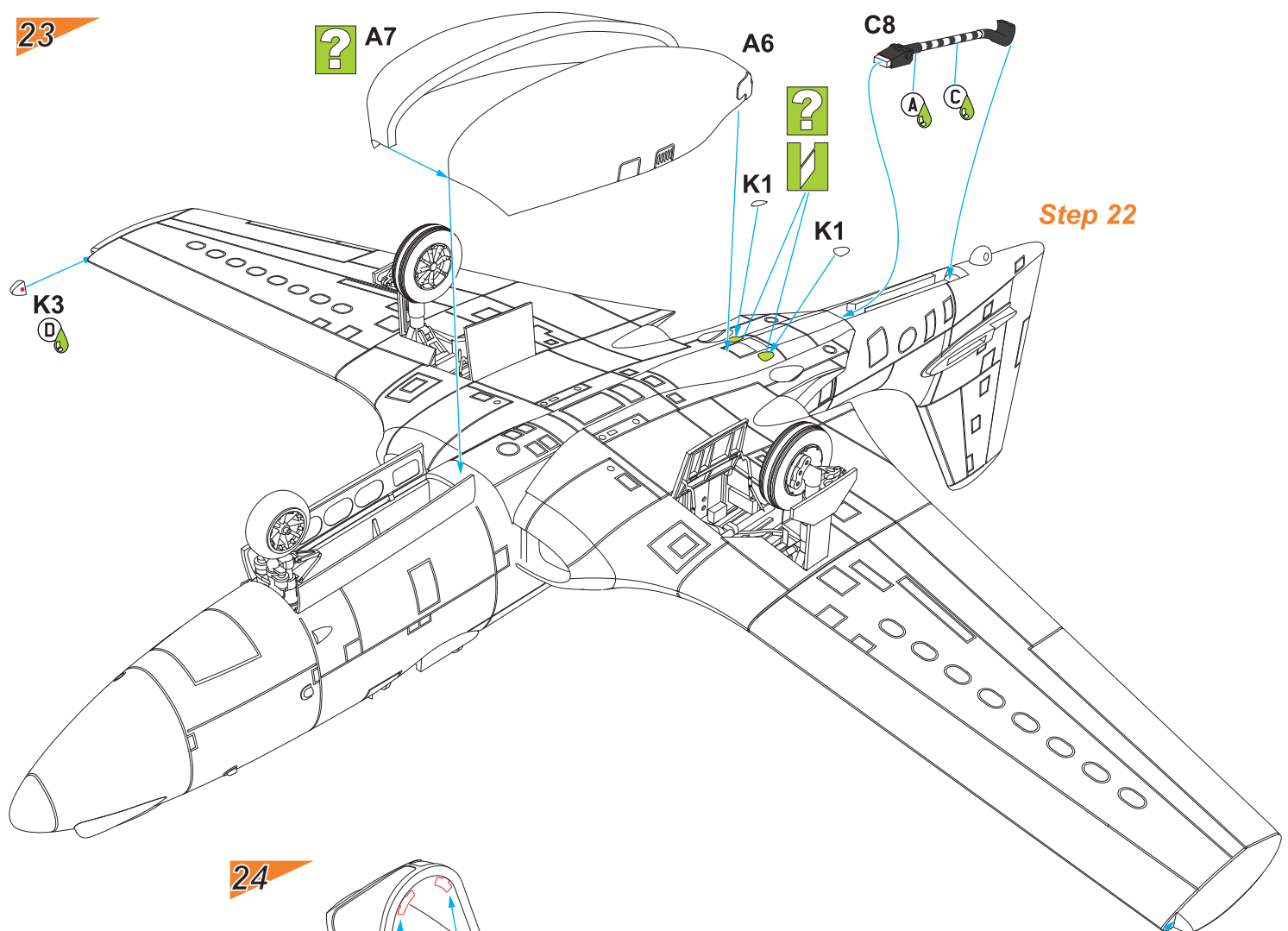
22



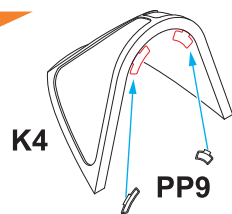
Info View



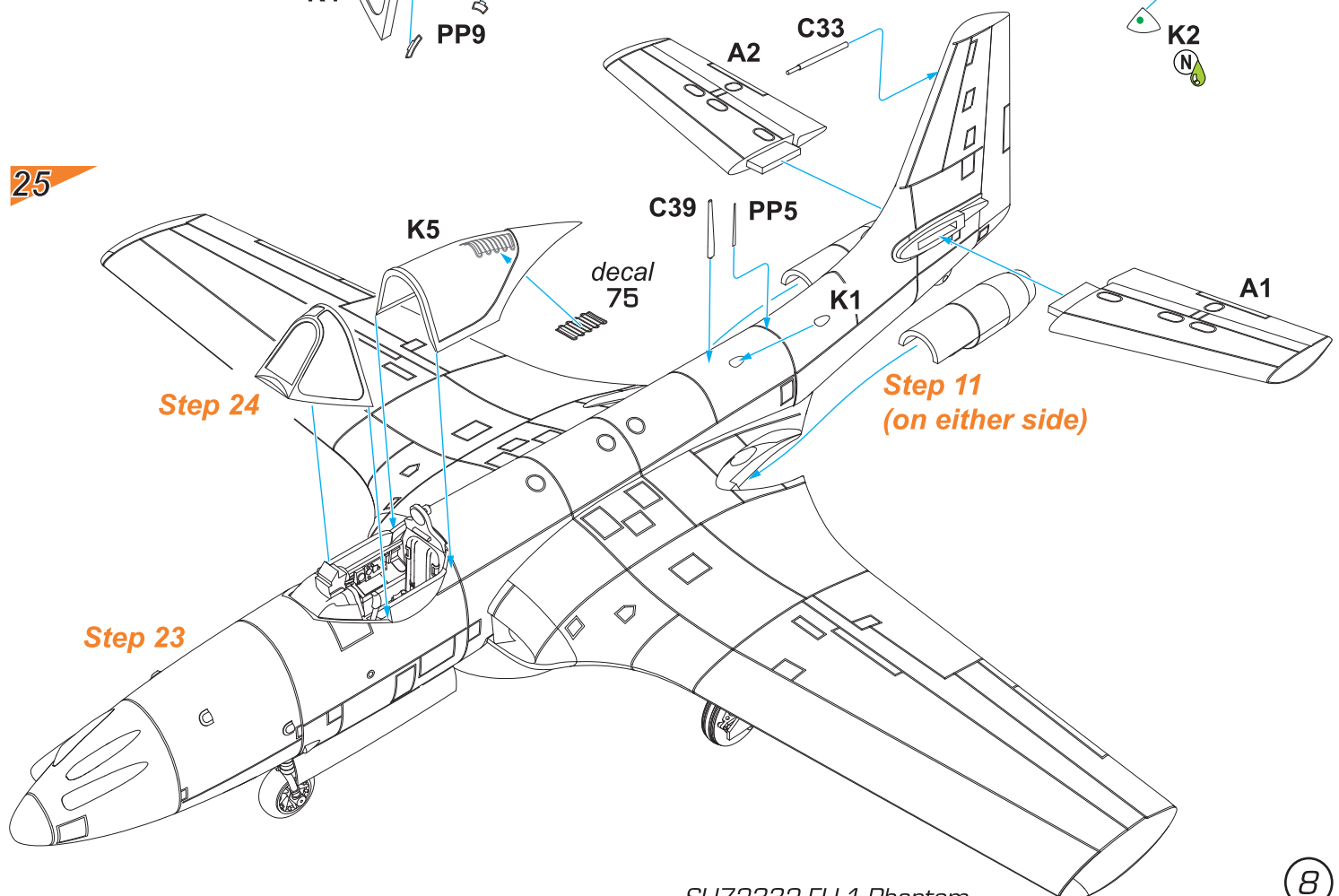
23



24



25



Camo A



Lesklá mořská modrá
Glossy Sea Blue
C365
FS15042

Opálený kov
Burnt Iron
SM05

Hliník
Aluminium
H8/C8

special
HOBBY
GUNZE
SANGYO



FH-1 Phantom, 122 (Pravděpodobně BuNo 111785), VF-17A, testy palubní způsobilosti, USS Saipan, květen 1948. Krytky tohoto stroje na přídí byly natřeny základovou barvou.

FH-1 Phantom, 122 (Probably BuNo 111785), VF-17A, carrier deck qualification trials, USS Saipan (CVL-48), May 1948. Forward fuselage inspection panels left in primer.

Camo B



| | | | |
|--------------------------------------------------------------------------------------------------------------------------------------------------------------------------------|--------------------------------------------------------------------------------------------------------------------------------------------------------|---------------------------------------------------------------------------------------------------------------------------------------------------|------------------------------------------------------------------------------------------------------------------------------------------------------------------------------|
| <div style="display: inline-block; width: 15px; height: 15px; background-color: #002060; border-radius: 50%;"></div> Lesklá mořská modrá Glossy Sea Blue C365 FS15042 | <div style="display: inline-block; width: 15px; height: 15px; background-color: #A0522D; border-radius: 50%;"></div> Opálený kov Burnt Iron SM05 | <div style="display: inline-block; width: 15px; height: 15px; background-color: #D3D3D3; border-radius: 50%;"></div> Hliník Aluminium H8/C8 | <div style="display: inline-block; width: 15px; height: 15px; background-color: #FFD700; border-radius: 50%;"></div> Chromová základní žlutá Zinc Chromate Yellow C352 |
|--------------------------------------------------------------------------------------------------------------------------------------------------------------------------------|--------------------------------------------------------------------------------------------------------------------------------------------------------|---------------------------------------------------------------------------------------------------------------------------------------------------|------------------------------------------------------------------------------------------------------------------------------------------------------------------------------|



 SH72332 FH-1 Phantom 10

FH-1 Phantom, 101 (BuNo 111799), VF-17A, Capt. W.N. Leonard , USS Coral Sea (CVB-43), 18. května 1948. Capt. W.N. Leonard byl zkušený pilot, eso se 6 až 8 sestřely (podklady se liší) účastník bitev v Korálovém moři a u Midwaye. Jako první Američan pilotoval ukořistěné Zero.

FH-1 Phantom, 101 (BuNo 111799), VF-17A, Capt. W.N. Leonard , USS Coral Sea (CVB-43), 18 May 1948. Capt. Leonard was an experienced ace pilot with 6 to 8 kills under his belt (sources vary) who took part in the Coral Sea and Midway battles. He was also the first American to pilot a captured Japanese Zero fighter aeroplane.

Camo C



Lesklá mořská modrá
Glossy Sea Blue
C365
FS15042

Opálený kov
Burnt Iron
SM05

Hliník
Aluminium
H8/ C8

special
HOBBY
GUNZE
SANGYO

FH-1 Phantom, 109, (BuNo 111786), VF-17A LCDR R.I. Clinke,
USS Franklin Delano Roosevelt, březem 1949.

FH-1 Phantom, 109, (BuNo 111786), VF-17A LCDR R.I. Clinke,
USS Franklin Delano Roosevelt (CVB-42), March 1949.

Camo D



Lesklá mořská modrá
Glossy Sea Blue
C365
FS15042

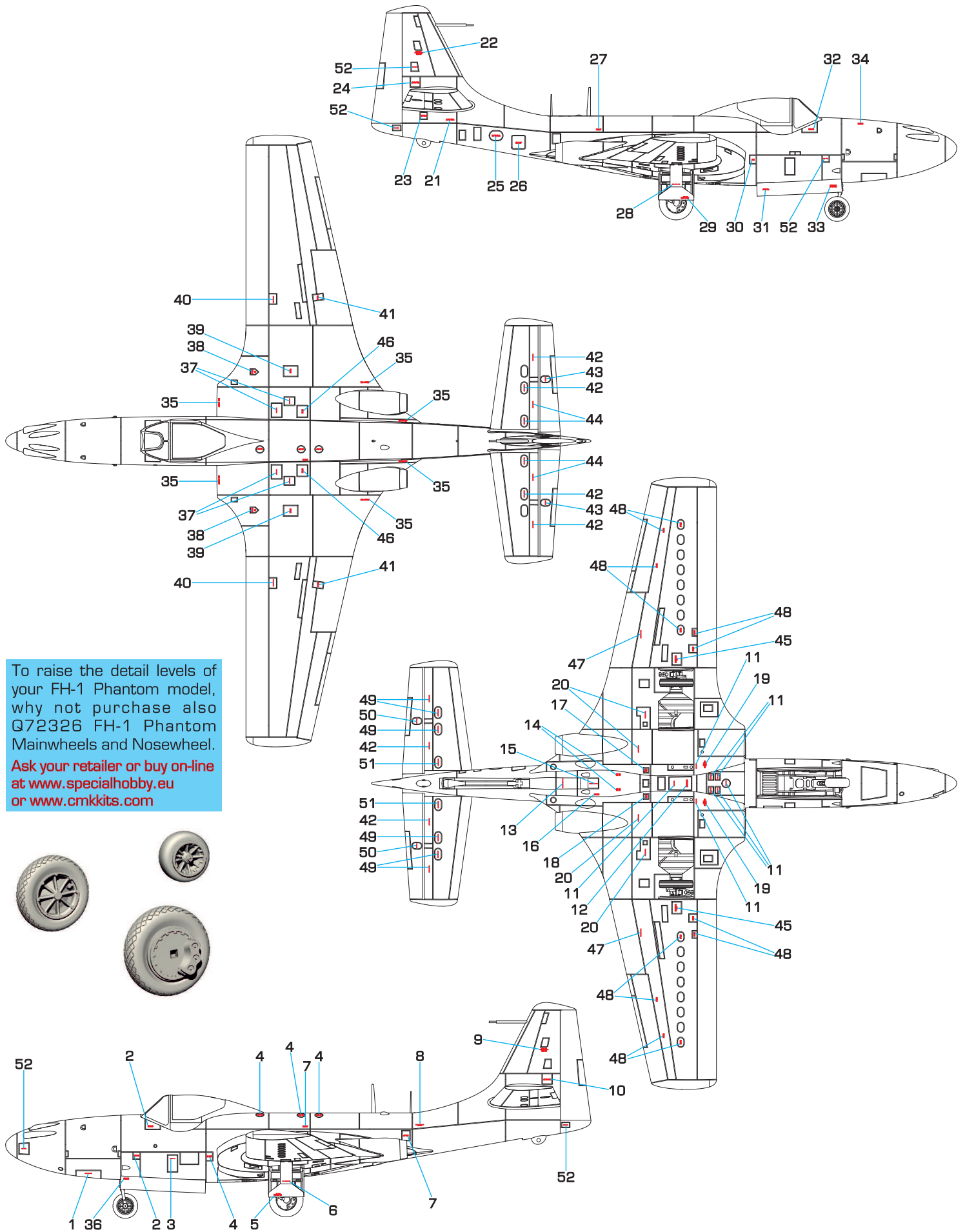
Opálený kov
Burnt Iron
SM05

Hliník
Aluminium
H8/C8

special
HOBBY
GUNZE
SANGYO

SH72332 FH-1 Phantom

12



CMK RESIN SETS FOR YOUR KIT





Q72293 1/72
P-40E/F/K/L/M/N-1 Seat



Q72294 1/72
P-40N-5 thru N-40 Seat



Q72299 1/72
P-40E/F/K/L/M/N-1 Seat with Belts



7386 1/72 P-40 Control Surfaces



7387 1/72 P-40 Undercarriage Set



7388 1/72 P-40 Engine Set



7390 1/72 P-40N Engine Set



Q72300 1/72
P-40N-5 thru N-40 Seat with Belts



Q72302 1/72
Kittyhawk I/II/III Seat with Sutton Harness



Q72303 1/72
Kittyhawk IV Seat with Sutton Harness



Q72295 1/72
P-40 Wheels Diamond Tread



Q72296 1/72
P-40 Wheels Block Tread



Q72297 1/72
P-40 Wheels Cross Tread



Q72298 1/72
P-40 Wheels Diamond Hole Tread



Q72301 1/72
P-40 Cockpit Sidewalls and Control Column



Q72309 1/72
P-40E thru N Control Column (3 pcs)



F72344 1/72
1/72 RAF Pilot Sitting in Cockpit w/Monkey on Shoulder + 2 Mechanics, Western Desert



7389 1/72 P-40E/K/M/N Armament Set



7391 1/72 1/72 P-40E/Kittyhawk Radio Set (US/RAF)

USE CMK TOOLS AND WEATHERING PIGMENTS FOR YOUR KITS

H1010 handle for our saws
priceless tool for resin
parts adjustment



H1011 CMK sanding stick
four different grit
of sanding papers on
one sanding stick



All of the above items can be found and ordered via our official
website and e-shop: WWW.CMKKITS.COM, WWW.SPECIALHOBBY.EU

**Special
HOBBY**

Special
HOBBY

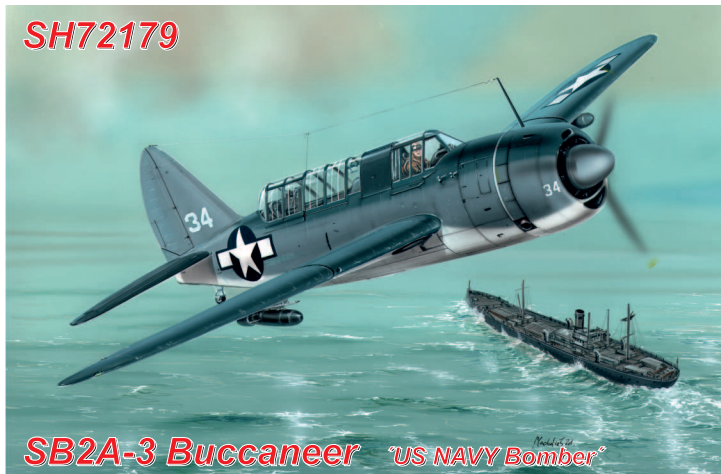
**Attractive 1/72 scale models
offered by SPECIAL HOBBY**

SH72159



D-558-1 Skystreak

SH72179



SB2A-3 Buccaneer "US NAVY Bomber"

SH72180



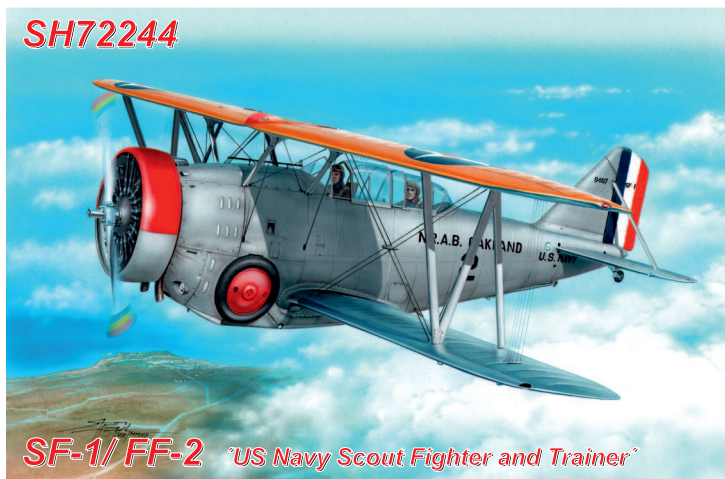
D-558-2 Skyrocket "Jet and Rocket"

SH72206



TT-1 Pinto "US Navy Trainer"

SH72244



SF-1/FF-2 "US Navy Scout Fighter and Trainer"

SH72277



Kittyhawk Mk. IA

SH72379



P-40K-1/5 Warhawk "Short Fuselage"

SH72350



C-41A "US Transport Plane"

Special
HOBBY

**Attractive 1/72 scale models
offered by SPECIAL HOBBY**

SH72076



AH-1G Cobra "Over Vietnam with M-35 Gun System"

SH72158



X-1E

SH72176



C-33/ C39 "US Transport Plane"

SH72228



B-18 Bolo "At War"

SH72265



B-18 Bolo "WWII Service"

SH72277



AH-1S Cobra "TDF against Terrorists"

SH72329



Delta 1D/ E "us Transport plane"

SH72350



SB2C-5 Helldiver "The Final Version"